

## Recombinant Rat Syn1 protein, His-tagged

Cat. No. Syn1-646R Lot. No. (See product label)

### SPECIFICATION

<b>Product Overview</b>	Recombinant Rat Syn1 protein(P09951)(113-420aa), fused with C-terminal His tag, was expressed in E.coli.
<b>Species</b>	Rat
<b>Source</b>	E.coli
<b>ProteinLength</b>	113-420a.a.
<b>Tag</b>	His
<b>Form</b>	If the delivery form is liquid, the default storage buffer is Tris/PBS-based buffer, 5%-50% glycerol. If the delivery form is lyophilized powder, the buffer before lyophilization is Tris/PBS-based buffer, 6% Trehalose, pH 8.0.
<b>Molecular Mass</b>	35.6 kDa
<b>Purity</b>	Greater than 90% as determined by SDS-PAGE.
<b>Storage</b>	Store at -20°C/-80°C upon receipt, aliquoting is necessary for mutiple use. Avoid repeated freeze-thaw cycles.
<b>Reconstitution</b>	We recommend that this vial be briefly centrifuged prior to opening to bring the contents to the bottom. Please reconstitute protein in deionized sterile water to a concentration of 0.1-1.0 mg/mL.We recommend to add 5-50% of glycerol (final

 Tel: 1-631-559-9269 1-516-512-3133

 Email: [info@creative-biomart.com](mailto:info@creative-biomart.com)  Fax: 1-631-938-8127

 45-1 Ramsey Road, Shirley, NY 11967, USA

concentration) and aliquot for long-term storage at -20°C/-80°C.

**AA Sequence**

ARVLLVIDEPHTDWAKYFKGKKIHGEIDIKVEQAEFSDLNLVAHANGGFSVDMEVLR  
NGVKVVRSLKPDFVLIRQHAFSMARNGDYRSLVIGLQYAGIPSVNSLHSVYNFCDKP  
WVFAQMVRLHKKLGT EEFPLIDQTFYPNHKEMLSSTTYPVVVKMGHAHSGMGKVK  
VDNQHDFQDIASVVALTKTYATAEPFIDAKYDVRVQKIGQNYKAYMRTSVSGNWKT  
NTGSAMLEQIAMSDRYKLWVDTCSEIFGGLDICAVEALHGKDGRDHIIIEVVGSSMPLI  
GDHQDEDKQLLEVELVVKMTQALPR

**GENE INFORMATION**

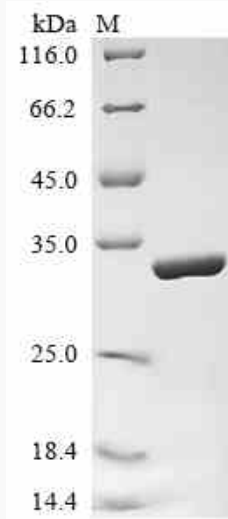
<b>Gene Name</b>	<a href="#">Syn1 synapsin I [ Rattus norvegicus ]</a>
<b>Official Symbol</b>	<a href="#">Syn1</a>
<b>Synonyms</b>	SYN1; synapsin I; synapsin-1; synapsin 1;
<b>Gene ID</b>	<a href="#">24949</a>
<b>mRNA Refseq</b>	<a href="#">NM_001110782</a>
<b>Protein Refseq</b>	<a href="#">NP_001104252</a>


 Tel: 1-631-559-9269 1-516-512-3133

 Email: [info@creative-biomart.com](mailto:info@creative-biomart.com)  Fax: 1-631-938-8127

 45-1 Ramsey Road, Shirley, NY 11967, USA

**SDS-PAGE**



 Tel: 1-631-559-9269 1-516-512-3133

 Email: [info@creative-biomart.com](mailto:info@creative-biomart.com)  Fax: 1-631-938-8127

 45-1 Ramsey Road, Shirley, NY 11967, USA