

Recombinant Rat Syt1 Full Length Transmembrane protein, His-tagged

Cat. No. Syt1-2156R **Lot. No.** (See product label)

SPECIFICATION

Product Overview

Recombinant Rat Syt1 protein(P21707)(1-421aa), fused with N-terminal His tag, was expressed in in vitro E. coli expression system.

Species

Rat

Source

E.coli

ProteinLength

1-421aa

Form

If the delivery form is liquid, the default storage buffer is Tris/PBS-based buffer, 5%-50% glycerol.
If the delivery form is lyophilized powder, the buffer before lyophilization is Tris/PBS-based buffer, 6% Trehalose, pH 8.0.

Molecular Mass

53.5 kDa

AA Sequence

MVSASHPEALAAPVTTVATLVPHNATEPASPGEKEDAFSKLKQKFMNELHKKIPLPP
WALIAIAIVAVLLVVTCCFCVCKKCLFKKKKKNKKKGKEKGGKNAINMKDVKDLGKTMKD
QALKDDDAETGLTDGEEKEEPKEEEKLGLKQYSLDYDFQNNQLLVGIIQAAELPALD
MGGTSDPYVKVFLLPDKKKKFETKVHRKTLNPFVNEQFTFKVPYSELGGKTLVMAV
YDFDRFSKHDIIGEFKVPMTVDFGHVTEEWRDLQSAEKEEQEKLGDICFSLRYVPT
AGKLTVVILEAKNLKMDVGGLSDPYVKIHLMQNGKRLKKKKTTIKKNTLNPPYINESF
SFEVPFEQIQKVQVVVTVLDYDKIGKND AIGKVFVGYNSTGAELRHWSMMLANPRR
PIAQWHTLQVEEEVDAMLAVKK

 Tel: 1-631-559-9269 1-516-512-3133

 Email: info@creative-biomart.com  Fax: 1-631-938-8127

 45-1 Ramsey Road, Shirley, NY 11967, USA

Purity	Greater than 85% as determined by SDS-PAGE.
Storage	Store at -20°C/-80°C upon receipt, aliquoting is necessary for mutiple use. Avoid repeated freeze-thaw cycles.
Reconstitution	Please reconstitute protein in deionized sterile water to a concentration of 0.1-1.0 mg/mL. We recommend to add 5-50% of glycerol (final concentration) and aliquot for long-term storage at -20°C/-80°C.

GENE INFORMATION

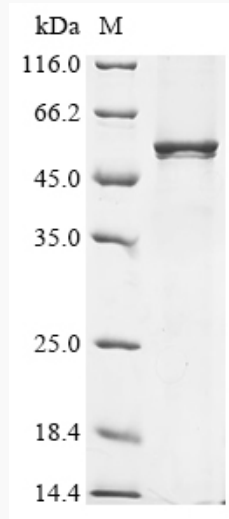
Gene Name	Sy11 synaptotagmin I [Rattus norvegicus]
Official Symbol	Sy11
Synonyms	SYT1; synaptotagmin I; synaptotagmin-1; sytl; synaptotagmin 1; P65;
Gene ID	25716
mRNA Refseq	NM_001033680
Protein Refseq	NP_001028852

 Tel: 1-631-559-9269 1-516-512-3133

 Email: info@creative-biomart.com  Fax: 1-631-938-8127

 45-1 Ramsey Road, Shirley, NY 11967, USA

SDS-PAGE



 Tel: 1-631-559-9269 1-516-512-3133

 Email: info@creative-biomart.com  Fax: 1-631-938-8127

 45-1 Ramsey Road, Shirley, NY 11967, USA