

# Recombinant Full Length Human TAB1 Protein, C-Flag-tagged

Cat. No. TAB1-1772HFL Lot. No. (See product label)

## SPECIFICATION

<b>Product Overview</b>	Recombinant Full Length Human TAB1 Protein, fused to Flag-tag at C-terminus, was expressed in Mammalian cells.
<b>Species</b>	Human
<b>Source</b>	Mammalian Cells
<b>Description</b>	<p>The protein encoded by this gene was identified as a regulator of the MAP kinase kinase kinase MAP3K7/TAK1, which is known to mediate various intracellular signaling pathways, such as those induced by TGF beta, interleukin 1, and WNT-1. This protein interacts and thus activates TAK1 kinase. It has been shown that the C-terminal portion of this protein is sufficient for binding and activation of TAK1, while a portion of the N-terminus acts as a dominant-negative inhibitor of TGF beta, suggesting that this protein may function as a mediator between TGF beta receptors and TAK1. This protein can also interact with and activate the mitogen-activated protein kinase 14 (MAPK14/p38alpha), and thus represents an alternative activation pathway, in addition to the MAPKK pathways, which contributes to the biological responses of MAPK14 to various stimuli. Alternatively spliced transcript variants encoding distinct isoforms have been reported.</p>
<b>Form</b>	25 mM Tris HCl, pH 7.3, 100 mM glycine, 10% glycerol.
<b>Molecular Mass</b>	54.5 kDa
<b>AA Sequence</b>	MAAQRRSLLQSEQQPSWTDDLPLCHLSGVGSASNRSYSADGKGTESHPPEDSWL

 Tel: 1-631-559-9269 1-516-512-3133

 Email: [info@creative-biomart.com](mailto:info@creative-biomart.com)  Fax: 1-631-938-8127

 45-1 Ramsey Road, Shirley, NY 11967, USA

KFRSENNCFLYGVFNG YDGNRVTNFVAQRLSAELLLGQLNAEHAEADVRRVLLQAF  
 DVVERSFLESIDDALAEKASLQSQLPEGVP QHQLPPQYQKILERLKTLEISGGAM  
 AVVAVLLNNKLYVANVGTNRALLCKSTVDGLQVTQLNVDHTTE NEDELFRLSQLGL  
 DAGKIKQVGIICGQESTRIGDYKVKYGYTDIDLLSAAKSKPIIAEPEIHGAQPLDG VT  
 GFLVLMSEGLYKALEAAHGPGQANQEIAAMIDTEFAKQTSLDAVAQAVVDRVKRIHS  
 DTFASGGERAR FCPRHEDMTLLVRNFGYPLGEMSQPTPSPAPAAGGRVYPVSVPY  
 SSAQSTSKTSVTLSLVMP SQGMVNG AHSASTLDEATPTLTNQSPTLTQSTNHT  
 QSSSSSDGGLFRSRPAHSLPPGEDGRVEPYVDFAEFYRL WSVDHGEQSVVTAP  
 TRTRPLEQKLISEEDLAANDILDYKDDDDKV

**Purity** > 80% as determined by SDS-PAGE and Coomassie blue staining.

**Stability** Stable for 12 months from the date of receipt of the product under proper storage and handling conditions. Avoid repeated freeze-thaw cycles.

**Storage** Store at -80 centigrade.

**Concentration** >50 ug/mL as determined by microplate BCA method.

**Preparation** Recombinant protein was captured through anti-DDK affinity column followed by conventional chromatography steps.

**Protein Families** Druggable Genome

**Protein Pathways** MAPK signaling pathway, NOD-like receptor signaling pathway, Toll-like receptor signaling pathway

**Full Length** Full L.

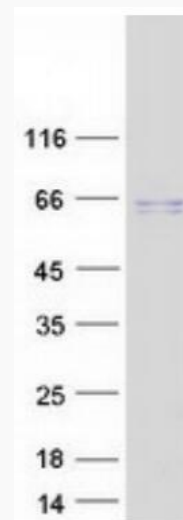
## GENE INFORMATION

 Tel: 1-631-559-9269 1-516-512-3133

 Email: [info@creative-biomart.com](mailto:info@creative-biomart.com)  Fax: 1-631-938-8127

 45-1 Ramsey Road, Shirley, NY 11967, USA

<b>Gene Name</b>	TAB1 TGF-beta activated kinase 1 (MAP3K7) binding protein 1 [ Homo sapiens (human) ]
<b>Official Symbol</b>	TAB1
<b>Synonyms</b>	3'-Tab1; MAP3K7IP1
<b>Gene ID</b>	10454
<b>mRNA Refseq</b>	NM_006116.3
<b>Protein Refseq</b>	NP_006107.1
<b>MIM</b>	602615
<b>UniProt ID</b>	Q15750



Coomassie blue staining of purified TAB1 protein.

 Tel: 1-631-559-9269 1-516-512-3133

 Email: [info@creative-biomart.com](mailto:info@creative-biomart.com)  Fax: 1-631-938-8127

 45-1 Ramsey Road, Shirley, NY 11967, USA