

Recombinant Human TAB1 Protein (Leu189-Pro439), N-His tagged

Cat. No. TAB1-5543H Lot. No. (See product label)

SPECIFICATION

Product Overview	Recombinant human TAB1 (Leu189-Pro439) fused with the N-His tag was expressed in E. coli.
Species	Human
Source	E.coli
ProteinLength	Leu189-Pro439
Form	Lyophilized powder/frozen liquid
Molecular Mass	29.10 kDa
Purity	> 90 % as determined by SDS-PAGE
Notes	For research use only.
Storage	Use a manual defrost freezer and avoid repeated freeze thaw cycles. Store at 2 to 8 centigrade for one week. Store at -20 to -80 centigrade for twelve months from the date of receipt.
Storage Buffer	0.01M PBS, pH 7.4, 0.02 % NLS
Reconstitution	Reconstitute in sterile water for a stock solution.

 Tel: 1-631-559-9269 1-516-512-3133

 Email: info@creative-biomart.com  Fax: 1-631-938-8127

 45-1 Ramsey Road, Shirley, NY 11967, USA

Shipping They are shipped out with dry ice/blue ice unless customers require otherwise.

GENE INFORMATION

Gene Name [TAB1 TGF-beta activated kinase 1/MAP3K7 binding protein 1 \[Homo sapiens \(human\) \]](#)

Official Symbol [TAB1](#)

Synonyms [TAB1](#); [TGF-beta activated kinase 1/MAP3K7 binding protein 1](#); [MAP3K7IP1](#), [mitogen activated protein kinase kinase kinase 7 interacting protein 1](#); [TGF-beta-activated kinase 1 and MAP3K7-binding protein 1](#); [mitogen activated protein kinase kinase 7 interacting protein 1](#); [TAK1 binding protein 1](#); [TAK1-binding protein 1](#); [transforming growth factor beta-activated kinase-binding protein 1](#); [mitogen-activated protein kinase kinase kinase 7-interacting protein 1](#); [3-Tab1](#); [MAP3K7IP1](#); [MGC57664](#);

Gene ID [10454](#)

mRNA Refseq [NM_006116](#)

Protein Refseq [NP_006107](#)

MIM [602615](#)

UniProt ID [Q15750](#)

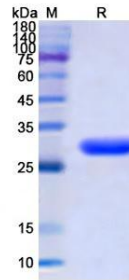
 Tel: 1-631-559-9269 1-516-512-3133

 Email: info@creative-biomart.com  Fax: 1-631-938-8127

 45-1 Ramsey Road, Shirley, NY 11967, USA



SDS-PAGE



Tel: 1-631-559-9269 1-516-512-3133

Email: info@creative-biomart.com Fax: 1-631-938-8127

45-1 Ramsey Road, Shirley, NY 11967, USA