

Recombinant Human TACSTD2 protein, His-tagged

Cat. No. TACSTD2-10H Lot. No. (See product label)

SPECIFICATION

| | |
|-------------------------|---|
| Product Overview | Recombinant Human TACSTD2 protein(P09758)(His27-Thr274), fused with C-terminal His tag, was expressed in HEK293. |
| Species | Human |
| Source | HEK293 |
| ProteinLength | His27-Thr274 |
| Tag | C-His |
| Form | Lyophilized from 0.22µm filtered solution in PBS (pH 7.4). Normally 5% trehalose is added as protectant before lyophilization. |
| Bio-activity | Immobilized Human TROP-2, His Tag at 0.5 µg/ml (100 µl/Well). Dose response curve for Anti-TROP-2 Antibody, hFc Tag with the EC50 of 7.1 ng/ml determined by ELISA. |
| Molecular Mass | The protein has a predicted MW of 28.9 kDa. Due to glycosylation, the protein migrates to 40-60 kDa based on Tris-Bis PAGE result. |
| Endotoxin | Less than 1EU per µg by the LAL method. |
| Purity | > 95% as determined by Tris-Bis PAGE; > 95% as determined by HPLC |

 Tel: 1-631-559-9269 1-516-512-3133

 Email: info@creative-biomart.com  Fax: 1-631-938-8127

 45-1 Ramsey Road, Shirley, NY 11967, USA

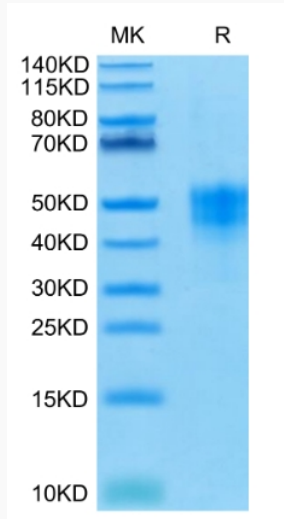
| | |
|-------------------------|---|
| Storage | Reconstituted protein stable at -80°C for 12 months, 4°C for 1 week. Use a manual defrost freezer and avoid repeated freeze-thaw cycles. |
| Reconstitution | Centrifuge tubes before opening. Reconstituting to a concentration more than 100 µg/ml is recommended. Dissolve the lyophilized protein in distilled water. |
| GENE INFORMATION | |
| Gene Name | TACSTD2 tumor-associated calcium signal transducer 2 [Homo sapiens] |
| Official Symbol | TACSTD2 |
| Synonyms | TACSTD2; tumor-associated calcium signal transducer 2; M1S1; EGP 1; GA733 1; TROP2; epithelial glycoprotein-1; cell surface glycoprotein TROP2; cell surface glycoprotein Trop-2; pancreatic carcinoma marker protein GA7331; pancreatic carcinoma marker protein GA733-1; gastrointestinal tumor-associated antigen GA7331; membrane component chromosome 1 surface marker 1; membrane component, chromosome 1, surface marker 1; 40kD glycoprotein, identified by monoclonal GA733; EGP1; GP50; EGP-1; GA7331; GA733-1; |
| Gene ID | 4070 |
| mRNA Refseq | NM_002353 |
| Protein Refseq | NP_002344 |
| MIM | 137290 |
| UniProt ID | P09758 |

 Tel: 1-631-559-9269 1-516-512-3133

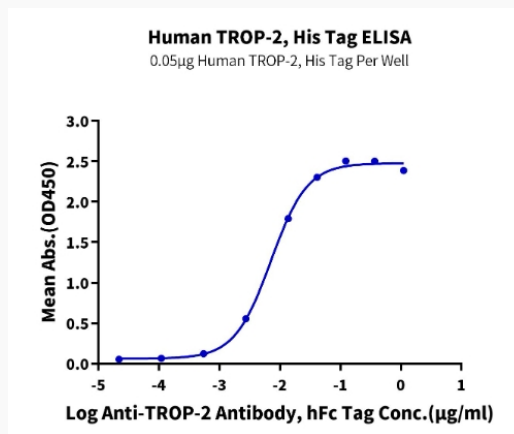
 Email: info@creative-biomart.com  Fax: 1-631-938-8127

 45-1 Ramsey Road, Shirley, NY 11967, USA

Tris-Bis PAGE



ELISA Data



 Tel: 1-631-559-9269 1-516-512-3133

 Email: info@creative-biomart.com  Fax: 1-631-938-8127

 45-1 Ramsey Road, Shirley, NY 11967, USA