

Recombinant Human TACSTD2 protein, His-Avi-tagged, Biotinylated

Cat. No. TACSTD2-110H **Lot. No.** (See product label)

SPECIFICATION

Product Overview	Biotinylated Recombinant Human TACSTD2 protein(P09758)(His27-Thr274), fused with C-terminal His and Avi tag, was expressed in HEK293.
Species	Human
Source	HEK293
ProteinLength	His27-Thr274
Tag	C-His-Avi
Conjugation/Label	Biotin
Form	Lyophilized from 0.22µm filtered solution in PBS (pH 7.4). Normally 5% trehalose is added as protectant before lyophilization.
Bio-activity	Immobilized Biotinylated Human TROP-2, His Tag at 0.5µg/ml (100µl/well) on the streptavidin precoated plate (5µg/ml). Dose response curve for Anti-TROP-2 Antibody, hFc Tag with the EC50 of 2.5ng/ml determined by ELISA.
Molecular Mass	The protein has a predicted MW of 30.5 kDa. Due to glycosylation, the protein migrates to 46-55 kDa based on Tris-Bis PAGE result.
Endotoxin	Less than 1EU per µg by the LAL method.

 Tel: 1-631-559-9269 1-516-512-3133

 Email: info@creative-biomart.com  Fax: 1-631-938-8127

 45-1 Ramsey Road, Shirley, NY 11967, USA

Purity	> 95% as determined by Tris-Bis PAGE; > 95% as determined by HPLC
Storage	Reconstituted protein stable at -80°C for 12 months, 4°C for 1 week. Use a manual defrost freezer and avoid repeated freeze-thaw cycles.
Reconstitution	Centrifuge tubes before opening. Reconstituting to a concentration more than 100 µg/ml is recommended. Dissolve the lyophilized protein in distilled water.
Conjugation	Biotin
GENE INFORMATION	
Gene Name	TACSTD2 tumor-associated calcium signal transducer 2 [Homo sapiens]
Official Symbol	TACSTD2
Synonyms	TACSTD2; tumor-associated calcium signal transducer 2; M1S1; EGP 1; GA733 1; TROP2; epithelial glycoprotein-1; cell surface glycoprotein TROP2; cell surface glycoprotein Trop-2; pancreatic carcinoma marker protein GA7331; pancreatic carcinoma marker protein GA733-1; gastrointestinal tumor-associated antigen GA7331; membrane component chromosome 1 surface marker 1; membrane component, chromosome 1, surface marker 1; 40kD glycoprotein, identified by monoclonal GA733; EGP1; GP50; EGP-1; GA7331; GA733-1;
Gene ID	4070
mRNA Refseq	NM_002353
Protein Refseq	NP_002344
MIM	137290

 Tel: 1-631-559-9269 1-516-512-3133

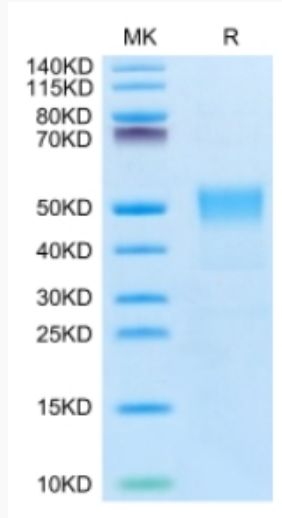
 Email: info@creative-biomart.com  Fax: 1-631-938-8127

 45-1 Ramsey Road, Shirley, NY 11967, USA

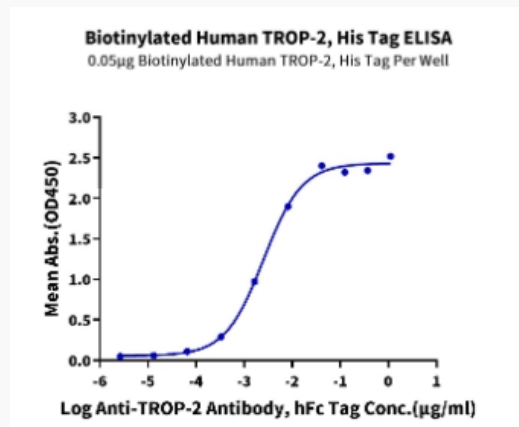
UniProt ID

P09758

Tris-Bis PAGE



ELISA Data



 Tel: 1-631-559-9269 1-516-512-3133

 Email: info@creative-biomart.com  Fax: 1-631-938-8127

 45-1 Ramsey Road, Shirley, NY 11967, USA