

# Recombinant Human tumor-associated calcium signal transducer 2 Protein, His tagged

Cat. No. TACSTD2-141H Lot. No. (See product label)

## SPECIFICATION

<b>Product Overview</b>	Recombinant human TACSTD2/TROP2 protein (P09758) (Thr 27-Thr 274) with a His tag at the C-terminus was expressed in HEK293.
<b>Species</b>	Human
<b>Source</b>	HEK293
<b>ProteinLength</b>	27-274aa

**Description**

Human TROP-2, also called tumor associated calcium signal transducer 2 (TACSTD2), GA733-1, gp50 and T16, is a type I cell surface glycoprotein that is highly expressed on human carcinomas. It was originally identified as an antigen present on human gastrointestinal tumors and is the second of two members of this family. The other family member is GA733-2, also called EpCAM, TROP-1, 17-1A, gp40 and KSA. The TROP-2 gene is unique in that it contains no introns. A study of these two genes suggested that TROP-2 was the result of a retroposition of the EpCAM gene. TROP-2 and EpCAM share approximately 49% amino acid identity and approximately 67% similarity. Human and mouse TROP-2 share 87% similarity. The human TROP-2 protein consists of a putative 26 amino acid (aa) signal sequence, a 248 aa extracellular domain, a 23 aa transmembrane region and a 26 aa cytoplasmic domain. TROP-2 is capable of transducing an intracellular calcium signal and may play a role in tumor growth. It also has adhesive functions.

 Tel: 1-631-559-9269 1-516-512-3133

 Email: [info@creative-biomart.com](mailto:info@creative-biomart.com)  Fax: 1-631-938-8127

 45-1 Ramsey Road, Shirley, NY 11967, USA

<b>Tag</b>	C-His
<b>Molecular Mass</b>	29.1 kDa
<b>Endotoxin</b>	Less than 1.0 EU/μg by the LAL method.
<b>Purity</b>	>95% as determined by SDS-PAGE.
<b>Storage</b>	Please avoid repeated freeze-thaw cycles. Samples are stable for up to twelve months from date of receipt at -20 to -80 centigrade. It is recommended that aliquot the reconstituted solution to minimize freeze-thaw cycles.
<b>Storage Buffer</b>	Lyophilized from a 0.2 μm filtered solution of PBS, pH7.4, 5% Trehalose, 5% mannitol.
<b>Reconstitution</b>	Reconstitute at 250 μg/mL in sterile water.

## GENE INFORMATION

<b>Gene Name</b>	TACSTD2 tumor-associated calcium signal transducer 2 [ Homo sapiens (human) ]
<b>Official Symbol</b>	TACSTD2
<b>Synonyms</b>	TACSTD2; tumor-associated calcium signal transducer 2; M1S1; EGP 1; GA733 1; TROP2; epithelial glycoprotein-1; cell surface glycoprotein TROP2; cell surface glycoprotein Trop-2; pancreatic carcinoma marker protein GA7331; pancreatic carcinoma marker protein GA733-1; gastrointestinal tumor-associated antigen GA7331; membrane component chromosome 1 surface marker 1; membrane component, chromosome 1, surface marker 1; 40kD glycoprotein, identified by monoclonal GA733; EGP1; GP50; EGP-1; GA7331; GA733-1;

 Tel: 1-631-559-9269 1-516-512-3133

 Email: [info@creative-biomart.com](mailto:info@creative-biomart.com)  Fax: 1-631-938-8127

 45-1 Ramsey Road, Shirley, NY 11967, USA

**Gene ID** 4070

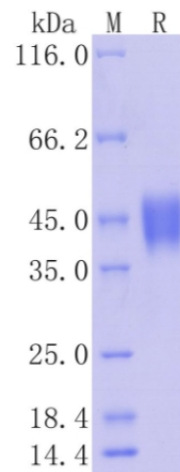
**mRNA Refseq** NM\_002353

**Protein Refseq** NP\_002344

**MIM** 137290

**UniProt ID** P09758

**Protein on SDS-PAGE under reducing (R) condition.**



 Tel: 1-631-559-9269 1-516-512-3133

 Email: [info@creative-biomart.com](mailto:info@creative-biomart.com)  Fax: 1-631-938-8127

 45-1 Ramsey Road, Shirley, NY 11967, USA