

Active Recombinant Human TACSTD2 protein, hFc-tagged

Cat. No. TACSTD2-219H Lot. No. (See product label)

SPECIFICATION

Product Overview	Recombinant Human TACSTD2 protein(P09758)(Gln31-Thr274), fused with hFc tag, was expressed in HEK293.
Species	Human
Source	HEK293
ProteinLength	Gln31-Thr274
Form	Lyophilized from 0.22 µm filtered solution in PBS, pH7.4.
Bio-activity	When Recombinant Human TROP2/ hFC Protein is immobilized at 2µg/mL (100 µ/well), the concentration of Anti-Human TROP2[sacituzumab] that produces 50% of the optimal binding response is approximately 40 ng/ml.
Molecular Mass	The protein has a calculated MW of 53kDa.The reducing (R) heterodimer protein migrates as 60-75 kDa due to glycosylation
Endotoxin	<1EU/mg
Purity	SDS-PAGE>95%SEC>95%
Storage	Store at -20°C.
Reconstitution	sterile H5O

 Tel: 1-631-559-9269 1-516-512-3133

 Email: info@creative-biomart.com  Fax: 1-631-938-8127

 45-1 Ramsey Road, Shirley, NY 11967, USA

GENE INFORMATION

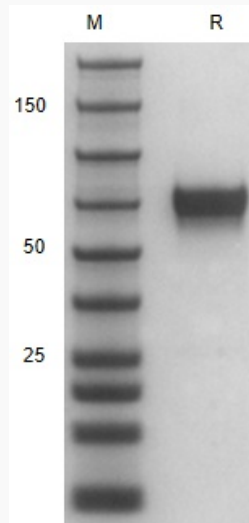
Gene Name	TACSTD2 tumor-associated calcium signal transducer 2 [Homo sapiens]
Official Symbol	TACSTD2
Synonyms	TACSTD2; tumor-associated calcium signal transducer 2; M1S1; EGP 1; GA733 1; TROP2; epithelial glycoprotein-1; cell surface glycoprotein TROP2; cell surface glycoprotein Trop-2; pancreatic carcinoma marker protein GA7331; pancreatic carcinoma marker protein GA733-1; gastrointestinal tumor-associated antigen GA7331; membrane component chromosome 1 surface marker 1; membrane component, chromosome 1, surface marker 1; 40kD glycoprotein, identified by monoclonal GA733; EGP1; GP50; EGP-1; GA7331; GA733-1;
Gene ID	4070
mRNA Refseq	NM_002353
Protein Refseq	NP_002344
MIM	137290
UniProt ID	P09758

 Tel: 1-631-559-9269 1-516-512-3133

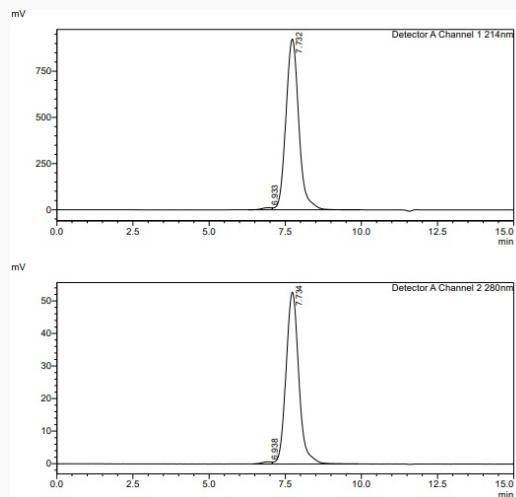
 Email: info@creative-biomart.com  Fax: 1-631-938-8127

 45-1 Ramsey Road, Shirley, NY 11967, USA

SDS-PAGE



SDS-HPLC

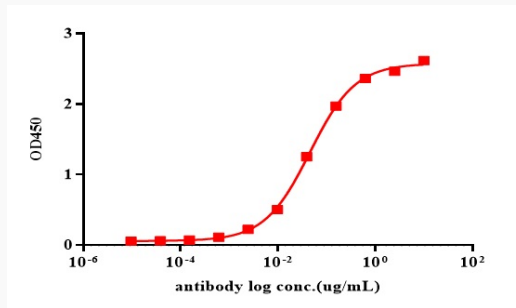


 Tel: 1-631-559-9269 1-516-512-3133

 Email: info@creative-biomart.com  Fax: 1-631-938-8127

 45-1 Ramsey Road, Shirley, NY 11967, USA

ELISA



 Tel: 1-631-559-9269 1-516-512-3133

 Email: info@creative-biomart.com  Fax: 1-631-938-8127

 45-1 Ramsey Road, Shirley, NY 11967, USA