

## Recombinant Human TACSTD2 protein, His-tagged

**Cat. No.** TACSTD2-5633H    **Lot. No.** (See product label)

### SPECIFICATION

<b>Product Overview</b>	Recombinant Human TACSTD2 protein(P09758)(27-274aa), fused with C-terminal His tag, was expressed in HEK293.
<b>Species</b>	Human
<b>Source</b>	HEK293
<b>ProteinLength</b>	27-274aa
<b>Tag</b>	C-His
<b>Form</b>	Lyophilized from a 0.2 µm filtered 20 mM Tris-HCl, 0.5 M NaCl, 6% Trehalose, pH 8.0
<b>Bio-activity</b>	Measured by its binding ability in a functional ELISA. Immobilized Human TROP2 at 2 µg/mL can bind Anti-TROP2 recombinant antibody, the EC50 is 0.7284-1.075 ng/mL.
<b>Molecular Mass</b>	30.6 kDa
<b>Endotoxin</b>	Less than 1.0 EU/ug as determined by LAL method.
<b>Purity</b>	Greater than 95% as determined by SDS-PAGE.
<b>Storage</b>	Store at -20°C/-80°C upon receipt, aliquoting is necessary for mutiple use. Avoid repeated freeze-thaw cycles.

 Tel: 1-631-559-9269    1-516-512-3133

 Email: [info@creative-biomart.com](mailto:info@creative-biomart.com)     Fax: 1-631-938-8127

 45-1 Ramsey Road, Shirley, NY 11967, USA

<b>Reconstitution</b>	We recommend that this vial be briefly centrifuged prior to opening to bring the contents to the bottom. Please reconstitute protein in deionized sterile water to a concentration of 0.1-1.0 mg/mL. We recommend to add 5-50% of glycerol (final concentration) and aliquot for long-term storage at -20°C/-80°C.
<b>AA Sequence</b>	HTAAQDNCTCPTNKMTVCSPDGPGRQCRCRALGSGMAVDCSTLTSKCLLLKARMS APKNARTLVRPSEHALVDNDGLYDPDCDPEGRFKARQCNQTSVCWCVNSVGVRR TDKGDSLRCDELVRTHHILIDLRHRPTAGAFNHSDLDAELRRLFRERYRLHPKFVAA VHYEQPTIQIELRQNTSQKAAGDVDIGDAAYYFERDIKGESLFQGRGGLDLRVRGEP LQVERTLIYYLDEIPPKFSMKRLT

## GENE INFORMATION

<b>Gene Name</b>	TACSTD2 tumor-associated calcium signal transducer 2 [ Homo sapiens ]
<b>Official Symbol</b>	TACSTD2
<b>Synonyms</b>	TACSTD2; tumor-associated calcium signal transducer 2; M1S1; EGP 1; GA733 1; TROP2; epithelial glycoprotein-1; cell surface glycoprotein TROP2; cell surface glycoprotein Trop-2; pancreatic carcinoma marker protein GA7331; pancreatic carcinoma marker protein GA733-1; gastrointestinal tumor-associated antigen GA7331; membrane component chromosome 1 surface marker 1; membrane component, chromosome 1, surface marker 1; 40kD glycoprotein, identified by monoclonal GA733; EGP1; GP50; EGP-1; GA7331; GA733-1;
<b>Gene ID</b>	4070
<b>mRNA Refseq</b>	NM_002353
<b>Protein Refseq</b>	NP_002344

 Tel: 1-631-559-9269 1-516-512-3133

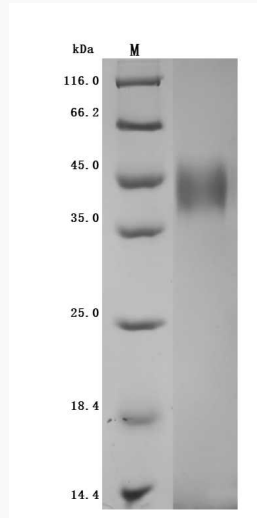
 Email: [info@creative-biomart.com](mailto:info@creative-biomart.com)  Fax: 1-631-938-8127

 45-1 Ramsey Road, Shirley, NY 11967, USA

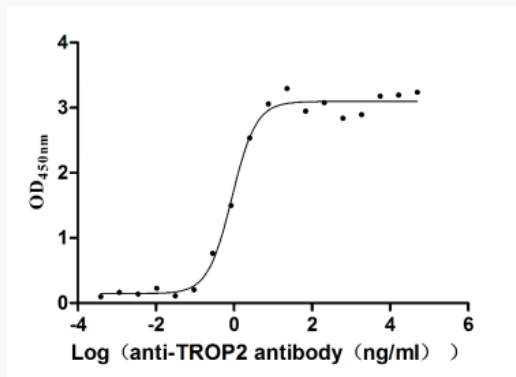
**MIM** 137290

**UniProt ID** P09758

**SDS-PAGE**



**Activity**



 Tel: 1-631-559-9269 1-516-512-3133

 Email: [info@creative-biomart.com](mailto:info@creative-biomart.com)  Fax: 1-631-938-8127

 45-1 Ramsey Road, Shirley, NY 11967, USA