

Recombinant Human TACSTD2 Protein (His27-Thr274), C-mFc and 6xHis-tagged

Cat. No. TACSTD2-735H Lot. No. (See product label)

SPECIFICATION

Product Overview	Recombinant Human TACSTD2 Protein (His27-Thr274) with C-mFc and 6xHis tag was expressed in HEK293.
Species	Human
Source	HEK293
ProteinLength	His27-Thr274
Description	This intronless gene encodes a carcinoma-associated antigen. This antigen is a cell surface receptor that transduces calcium signals. Mutations of this gene have been associated with gelatinous drop-like corneal dystrophy.
Form	Lyophilized
Molecular Mass	54.9 kDa
Purity	> 95% as determined by SDS-PAGE and Coomassie blue staining.
Storage	Store at -80 centigrade for 12 months (Avoid repeated freezing and thawing)
Storage Buffer	Lyophilized from sterile PBS, pH 7.4. Normally 5 % - 100 % trehalose is added as protectants before lyophilization.

 Tel: 1-631-559-9269 1-516-512-3133

 Email: info@creative-biomart.com  Fax: 1-631-938-8127

 45-1 Ramsey Road, Shirley, NY 11967, USA

GENE INFORMATION

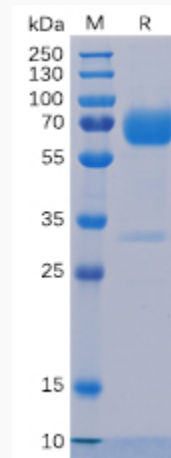
Gene Name	TACSTD2 tumor-associated calcium signal transducer 2 [Homo sapiens (human)]
Official Symbol	TACSTD2
Synonyms	TACSTD2; tumor-associated calcium signal transducer 2; M1S1; EGP 1; GA733 1; TROP2; epithelial glycoprotein-1; cell surface glycoprotein TROP2; cell surface glycoprotein Trop-2; pancreatic carcinoma marker protein GA7331; pancreatic carcinoma marker protein GA733-1; gastrointestinal tumor-associated antigen GA7331; membrane component chromosome 1 surface marker 1; membrane component, chromosome 1, surface marker 1; 40kD glycoprotein, identified by monoclonal GA733; EGP1; GP50; EGP-1; GA7331; GA733-1;
Gene ID	4070
mRNA Refseq	NM_002353
Protein Refseq	NP_002344
MIM	137290
UniProt ID	P09758

 Tel: 1-631-559-9269 1-516-512-3133

 Email: info@creative-biomart.com  Fax: 1-631-938-8127

 45-1 Ramsey Road, Shirley, NY 11967, USA

SDS-PAGE



 Tel: 1-631-559-9269 1-516-512-3133

 Email: info@creative-biomart.com  Fax: 1-631-938-8127

 45-1 Ramsey Road, Shirley, NY 11967, USA