

Recombinant Human TALDO1 Protein, Myc/DDK-tagged, C13 and N15-labeled

Cat. No. TALDO1-2723H **Lot. No.** (See product label)

SPECIFICATION

Product Overview	TALDO1 MS Standard C13 and N15-labeled recombinant protein (NP_006746) with a C-terminal MYC/DDK tag, was expressed in HEK293 cells.
Species	Human
Source	HEK293
Description	Transaldolase 1 is a key enzyme of the nonoxidative pentose phosphate pathway providing ribose-5-phosphate for nucleic acid synthesis and NADPH for lipid biosynthesis. This pathway can also maintain glutathione at a reduced state and thus protect sulfhydryl groups and cellular integrity from oxygen radicals. The functional gene of transaldolase 1 is located on chromosome 11 and a pseudogene is identified on chromosome 1 but there are conflicting map locations. The second and third exon of this gene were developed by insertion of a retrotransposable element. This gene is thought to be involved in multiple sclerosis.
Molecular Mass	37.5 kDa
AA Sequence	MSSSPVQRQRMESALDQLKQFTTVVADTGDFHAIDEYKPQDATTNPSLILAAAQMP AYQELVEEAIAYGRKLGGSQEDQIKNAIDKLFVLFGAEILKKIPGRVSTEV DARLSFDK DAMVARARRLIELYKEAGISKDRILIKLSSTWEGIQAGKELEEQHGHCNMTLLFSFAQ AVACAEAGVTLISPFVGRILDWHVANTDKKSYEPLDPGVKSVTKIYNYYKKFSYKTI VMGASFRNTGEIKALAGCDFLTISP KLLGELLQDNAKLVVLSAKAAQASDLEKIHL D

 Tel: 1-631-559-9269 1-516-512-3133

 Email: info@creative-biomart.com  Fax: 1-631-938-8127

 45-1 Ramsey Road, Shirley, NY 11967, USA

EKSFRWLHNEDQMAVEKLSDGIRKFAADAVKLERMLTERMFNAENKTRTRPLEQK
LISEEDLAANDILDYKDDDDKV

Purity > 80% as determined by SDS-PAGE and Coomassie blue staining

Stability Stable for 3 months from receipt of products under proper storage and handling conditions.

Storage Store at -80 centigrade. Avoid repeated freeze-thaw cycles.

Concentration 50 µg/mL as determined by BCA

Storage Buffer 100 mM glycine, 25 mM Tris-HCl, pH 7.3.

GENE INFORMATION

Gene Name [TALDO1 transaldolase 1 \[Homo sapiens \(human\) \]](#)

Official Symbol [TALDO1](#)

Synonyms TALDO1; transaldolase 1; transaldolase; glycerone transferase; dihydroxyacetone transferase; TAL; TALH; TAL-H; TALDOR;

Gene ID [6888](#)

mRNA Refseq [NM_006755](#)

Protein Refseq [NP_006746](#)

MIM [602063](#)

 Tel: 1-631-559-9269 1-516-512-3133

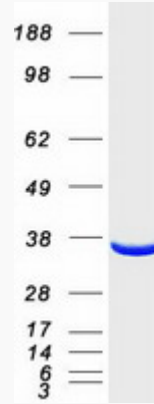
 Email: info@creative-biomart.com  Fax: 1-631-938-8127

 45-1 Ramsey Road, Shirley, NY 11967, USA

UniProt ID

P37837

SDS-PAGE



 Tel: 1-631-559-9269 1-516-512-3133

 Email: info@creative-biomart.com  Fax: 1-631-938-8127

 45-1 Ramsey Road, Shirley, NY 11967, USA