

Recombinant Human TAP1 Protein (Tyr525-Glu808), N-His tagged

Cat. No. TAP1-6397H Lot. No. (See product label)

SPECIFICATION

Product Overview	Recombinant human TAP1 (Tyr525-Glu808) fused with the N-His tag was expressed in E. coli.
Species	Human
Source	E.coli
ProteinLength	Tyr525-Glu808
Form	Lyophilized powder/frozen liquid
Molecular Mass	33.24 kDa
Purity	> 90 % as determined by SDS-PAGE
Notes	For research use only.
Storage	Use a manual defrost freezer and avoid repeated freeze thaw cycles. Store at 2 to 8 centigrade for one week. Store at -20 to -80 centigrade for twelve months from the date of receipt.
Storage Buffer	0.01M PBS, pH 7.4, 0.02 % NLS
Reconstitution	Reconstitute in sterile water for a stock solution.

 Tel: 1-631-559-9269 1-516-512-3133

 Email: info@creative-biomart.com  Fax: 1-631-938-8127

 45-1 Ramsey Road, Shirley, NY 11967, USA

Shipping They are shipped out with dry ice/blue ice unless customers require otherwise.

GENE INFORMATION

Gene Name [TAP1 transporter 1, ATP-binding cassette, sub-family B \(MDR/TAP\) \[Homo sapiens \(human\) \]](#)

Official Symbol [TAP1](#)

Synonyms

TAP1; transporter 1, ATP-binding cassette, sub-family B (MDR/TAP); ABCB2; antigen peptide transporter 1; D6S114E; PSF1; RING4; ABC transporter, MHC 1; peptide supply factor 1; peptide transporter PSF1; peptide transporter TAP1; really interesting new gene 4 protein; ATP-binding cassette sub-family B member 2; transporter associated with antigen processing; peptide transporter involved in antigen processing 1; ATP-binding cassette, sub-family B (MDR/TAP), member 2; transporter, ATP-binding cassette, major histocompatibility complex, 1; APT1; ABC17; PSF-1; TAP1N; TAP1*0102N; FLJ26666; FLJ41500;

Gene ID [6890](#)

mRNA Refseq [NM_000593](#)

Protein Refseq [NP_000584](#)

MIM [170260](#)

UniProt ID [Q03518](#)

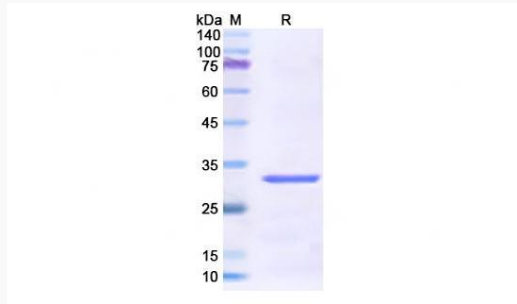
 Tel: 1-631-559-9269 1-516-512-3133

 Email: info@creative-biomart.com  Fax: 1-631-938-8127

 45-1 Ramsey Road, Shirley, NY 11967, USA



SDS-PAGE



Tel: 1-631-559-9269 1-516-512-3133

Email: info@creative-biomart.com Fax: 1-631-938-8127

45-1 Ramsey Road, Shirley, NY 11967, USA