

Recombinant Human TAP1 Protein, GST-tagged

Cat. No. TAP1-675H Lot. No. (See product label)

SPECIFICATION

Product Overview	Recombinant Human TAP1 Full-Length ORF Protein (1-808 aa) is produced by Wheat Germ (in vitro) expression system. This protein is fused with a GST tag at the N-terminal.
Species	Human
Source	Wheat Germ
ProteinLength	1-808 aa
Description	<p>The membrane-associated protein encoded by this gene is a member of the superfamily of ATP-binding cassette (ABC) transporters. ABC proteins transport various molecules across extra- and intra-cellular membranes. ABC genes are divided into seven distinct subfamilies (ABC1, MDR/TAP, MRP, ALD, OABP, GCN20, White). This protein is a member of the MDR/TAP subfamily. Members of the MDR/TAP subfamily are involved in multidrug resistance. The protein encoded by this gene is involved in the pumping of degraded cytosolic peptides across the endoplasmic reticulum into the membrane-bound compartment where class I molecules assemble. Mutations in this gene may be associated with ankylosing spondylitis, insulin-dependent diabetes mellitus, and celiac disease.</p>
Form	50 mM Tris-HCl, 10 mM reduced Glutathione, pH=8.0 in the elution buffer.
Molecular Mass	113.6 kDa

 Tel: 1-631-559-9269 1-516-512-3133

 Email: info@creative-biomart.com  Fax: 1-631-938-8127

 45-1 Ramsey Road, Shirley, NY 11967, USA

AA Sequence

MAELLASAGSACSWDFPRAPPSFPPPAASRGGLGGTRSFRRPHRGAESPRPGRDR
 DGVRVPMASSRCPAPRGCRCLPGASLAWLGTVLLLLADWVLLRTALPRIFSLLVPTA
 LPLLRVWAVGLSRWAVLWLGACGVLRTVGSKSENAGAQQWLAALKPLAAALGLA
 LPGLALFRELISWGAPGSADSTRLLHWGSHPTAFVVSAAAALPAAALWHKLGSLWV
 PGGQGGSGNPVRRLLGCLGSETRRLSLFLVLVSSLGEMAIFFFTGRLTDWILQDG
 SADTFTRNLTLMSILTIAVLEFVGDGIYNNMTMGHVHSHLQGEVFGAVLRQETEFFQ
 QNQTGNIMSRVTEDTSTLSDSLSENLSLFLWYLVRLCLLIGIMLWGSVSLTMVTLITL
 PLLFLLPKKVGKQWYQLLEVQVRESLAKSSQVAIEALSAMPTVRSFANEEGEAQKFRE
 KLQEIKTNLNQEAVAYAVNSWTTISGMLLKVGILYIGGQLVTSGAVSSGNLVTFVLY
 QMQFTQAVEVLLSIYPRVQKAVGSSEKIFEYLDRTPRCPPSGLLTPHLEGLVQFQD
 VSFAYPNRPDVLVLQGLTFTLRPGEVTALVGPNGSGKSTVAALLQONLYQPTGGQLL
 DGKPLPQYEHRYLHRQVAAVGQEPQVFRSLQENIAYGLTQKPTMEEITAAVKSG
 AHSFISGLPQGYDTEVDEAGSQLSGGQRQAVALARALIRKPCVLILDDATSALDANS
 QLQVEQLLYESPERYSRSVLLITQHLSLVEQADHILFLEGGAIREGGTHQQLMEKKG
 CYWAMVQAPADAPE

Applications

Enzyme-linked Immunoabsorbent Assay; Western Blot (Recombinant protein);
Antibody Production; Protein Array

Notes

Best use within three months from the date of receipt of this protein

Storage

Store at -80 centigrade. Aliquot to avoid repeated freezing and thawing.

GENE INFORMATION

Gene Name

TAP1 transporter 1, ATP-binding cassette, sub-family B (MDR/TAP) [Homo sapiens]

Official Symbol

TAP1

Synonyms

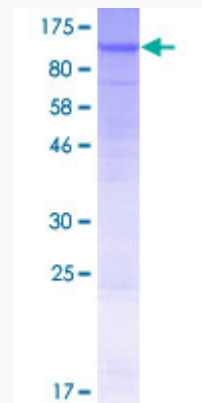
TAP1; ABCB2; D6S114E; PSF1; RING4; APT1; ABC17; PSF-1; TAP1N;

 Tel: 1-631-559-9269 1-516-512-3133

 Email: info@creative-biomart.com  Fax: 1-631-938-8127

 45-1 Ramsey Road, Shirley, NY 11967, USA

TAP1*0102N; FLJ26666; FLJ41500;

Gene ID 6890**mRNA Refseq** NM_000593**Protein Refseq** NP_000584**MIM** 170260**UniProt ID** Q03518

12.5% SDS-PAGE Stained with Coomassie Blue.

 Tel: 1-631-559-9269 1-516-512-3133 Email: info@creative-biomart.com  Fax: 1-631-938-8127 45-1 Ramsey Road, Shirley, NY 11967, USA