

Recombinant Human TAPBPL Protein, Myc/DDK-tagged, C13 and N15-labeled

Cat. No. TAPBPL-1354H **Lot. No.** (See product label)

SPECIFICATION

Product Overview	TAPBPL MS Standard C13 and N15-labeled recombinant protein (NP_060479) with a C-terminal MYC/DDK tag, was expressed in HEK293 cells.
Species	Human
Source	HEK293
Description	Tapasin, or TAPBP, is a member of the variable-constant Ig superfamily that links major histocompatibility complex (MHC) class I molecules to the transporter associated with antigen processing in the endoplasmic reticulum (ER). The TAPBP gene is located near the MHC complex on chromosome 6p21.3. TAPBPL is a member of the Ig superfamily that is localized on chromosome 12p13.3, a region somewhat paralogous to the MHC.
Molecular Mass	50.2 kDa
AA Sequence	MGTQEGWCLLLCLALSGAAETKPHPAEGQWRAVDVVLDCFLVKDGAHRGALASSE DRARASLVLKQVPVLDGSLIEDFTDFQGGTLAQDDPPIIFEASVDLVQIPQAEALLHA DCSGKEVTCEISRYFLQMTETTvkTAAWFMANVQVSGGGPSISLVMKTPRVAKNEV LWHPTLNPLSPQGTVRTAVEFQVMTQTQSLFLLGSSASLDCGFSMAPGLDLISVE WRLQHKGRGQLVYSWTAGQGQAVRKGATLEPAQLGMARDASLTLPGLTIQDEGTY ICQITTSLYRAQQIQLNIQASPKVRLSLANEALLPTLICDIAGYYPLDVVVTWTREELG GSPAQVSGASFSSLRQSVAGTYSISSSLTAEPGSAGATYTCQVTHISLEEPLGASTQ

 Tel: 1-631-559-9269 1-516-512-3133

 Email: info@creative-biomart.com  Fax: 1-631-938-8127

 45-1 Ramsey Road, Shirley, NY 11967, USA

VVPPERRTALGVIFASSLFLALMFLGLQRRQAPTGLGLLQAERWETTSCADTQSSH
LHEDRTARVVSQPSTRTRPQLEQKLISEEDLAANDILDYKDDDDKV

Purity > 80% as determined by SDS-PAGE and Coomassie blue staining

Stability Stable for 3 months from receipt of products under proper storage and handling conditions.

Storage Store at -80 centigrade. Avoid repeated freeze-thaw cycles.

Concentration 50 µg/mL as determined by BCA

Storage Buffer 100 mM glycine, 25 mM Tris-HCl, pH 7.3.

GENE INFORMATION

Gene Name TAPBPL TAP binding protein-like [Homo sapiens (human)]

Official Symbol TAPBPL

Synonyms TAPBPL; TAP binding protein-like; tapasin-related protein; FLJ10143; TAPBP R; TAPBPR; TAPASIN-R; tapasin-like; TAP-binding protein-like; TAP binding protein related; TAP-binding protein-related protein; TAPBP-R;

Gene ID 55080

mRNA Refseq NM_018009

Protein Refseq NP_060479

MIM 607081

 Tel: 1-631-559-9269 1-516-512-3133

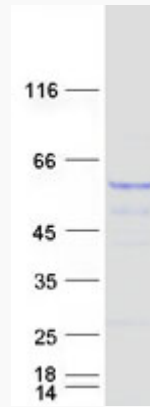
 Email: info@creative-biomart.com  Fax: 1-631-938-8127

 45-1 Ramsey Road, Shirley, NY 11967, USA

UniProt ID

Q9BX59

SDS-PAGE



 Tel: 1-631-559-9269 1-516-512-3133

 Email: info@creative-biomart.com  Fax: 1-631-938-8127

 45-1 Ramsey Road, Shirley, NY 11967, USA