

# Recombinant Full Length Human TAPBPL Protein, C-Flag-tagged

**Cat. No.** TAPBPL-842HFL    **Lot. No.** (See product label)

## SPECIFICATION

<b>Product Overview</b>	Recombinant Full Length Human TAPBPL Protein, fused to Flag-tag at C-terminus, was expressed in Mammalian cells.
<b>Species</b>	Human
<b>Source</b>	Mammalian Cells
<b>Description</b>	Tapasin, or TAPBP (MIM 601962), is a member of the variable-constant Ig superfamily that links major histocompatibility complex (MHC) class I molecules to the transporter associated with antigen processing (TAP; see MIM 170260) in the endoplasmic reticulum (ER). The TAPBP gene is located near the MHC complex on chromosome 6p21.3. TAPBPL is a member of the Ig superfamily that is localized on chromosome 12p13.3, a region somewhat paralogous to the MHC.
<b>Form</b>	25 mM Tris HCl, pH 7.3, 100 mM glycine, 10% glycerol.
<b>Molecular Mass</b>	50 kDa
<b>AA Sequence</b>	MGTQEGWCLLLCLALSGAAETKPHPAEGQWRAVDVVLDCFLVKDGAHRGALASSE DRARASLVLKQVPVL DDGSLEDFTDFQGGTLAQDDPPIIFEASVDLVQIPQAEALLH ADCSGKEVTCEISRYFLQMTETT VKTAA WFMANVQVSGGGPSISLVMKTPRVAKNE VLWHPTLNPLSPQGTVRTAVEFQVMTQTQSLSFLLGSSASL DCGFSMAPGLDLIS VEWRLQHKGRGQLVYSWTAGQGQAVRKGATLEPAQLGMARDASLTLPLGLTIQDEG T YICQITTSLYRAQQIQLNIQASPKVRLSLANEALLPTLICDIAGYYPLDVVVTWTREE

 Tel: 1-631-559-9269    1-516-512-3133

 Email: [info@creative-biomart.com](mailto:info@creative-biomart.com)     Fax: 1-631-938-8127

 45-1 Ramsey Road, Shirley, NY 11967, USA

LGGSPAQVSGA SFSSLRQSVAGTYSISSSLTAEPGSAGATYTCQVTHISLEEPLGAS  
 TQVVPPERRTALGVIFASSLFLLA  
 LMFLGLQRRQAPTGLGLLQAERWETTSCADTQSSHLHEDRTARVSQPSTRTRPLE  
 QKLISEEDLAANDILDYKDDDDKV

<b>Purity</b>	> 80% as determined by SDS-PAGE and Coomassie blue staining.
<b>Stability</b>	Stable for 12 months from the date of receipt of the product under proper storage and handling conditions. Avoid repeated freeze-thaw cycles.
<b>Storage</b>	Store at -80 centigrade.
<b>Concentration</b>	>50 ug/mL as determined by microplate BCA method.
<b>Preparation</b>	Recombinant protein was captured through anti-DDK affinity column followed by conventional chromatography steps.
<b>Protein Families</b>	Druggable Genome, Transmembrane
<b>Full Length</b>	Full L.

## GENE INFORMATION

<b>Gene Name</b>	TAPBPL TAP binding protein like [ Homo sapiens (human) ]
<b>Official Symbol</b>	TAPBPL
<b>Synonyms</b>	TAPBPR; TAPBP-R
<b>Gene ID</b>	55080

 Tel: 1-631-559-9269 1-516-512-3133

 Email: [info@creative-biomart.com](mailto:info@creative-biomart.com)  Fax: 1-631-938-8127

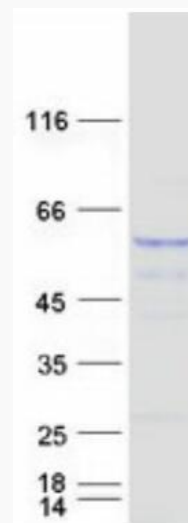
 45-1 Ramsey Road, Shirley, NY 11967, USA

mRNA Refseq [NM\\_018009.5](#)

Protein Refseq [NP\\_060479.3](#)

MIM [607081](#)

UniProt ID [Q9BX59](#)



Coomassie blue staining of purified TAPBPL protein.

 Tel: 1-631-559-9269 1-516-512-3133

 Email: [info@creative-biomart.com](mailto:info@creative-biomart.com)  Fax: 1-631-938-8127

 45-1 Ramsey Road, Shirley, NY 11967, USA