

# Recombinant Human TARM1 Protein, Myc/DDK-tagged, C13 and N15-labeled

**Cat. No.** TARM1-3621H    **Lot. No.** (See product label)

## SPECIFICATION

<b>Product Overview</b>	TARM1 MS Standard C13 and N15-labeled recombinant protein (NP_001129158) with a C-terminal MYC/DDK tag, was expressed in HEK293 cells.
<b>Species</b>	Human
<b>Source</b>	HEK293
<b>Description</b>	May act as receptor (By similarity). Negatively regulates TCR-mediated CD4+ T cell proliferation and activation, possibly by binding an unknown ligand on the T cell surface. Enhances Toll-like receptor-mediated production of pro-inflammatory cytokines by macrophages and neutrophils (By similarity).
<b>Molecular Mass</b>	29.3 kDa
<b>AA Sequence</b>	MIPKLLSLLCFRLCVGQGDTRGDGSLPKPSLSAWPSSVVPANSNVTLRCWTPARGV SFVLRKGGIILESPKPLDSTEGAAEFHLNLLKVRNAGEYTC EYYRKASPHILSQRSDV LLLLVTGHLSKPFLRTYQRGTVTAGGRVTLQCQKRDQLFVPI MFALLKAGTPSPIQLQ SPAGKEIDFSLVDVTAGDAGNYSCMY YQTKSPFWASEPSDQLEILVTVPPGTTSSNY SLGNFVRLGLAAVIVVIMGAFLVEAWYSRNVSPGESEAFKPETRTRPLEQKLISEEDL AANDILDYKDDDDKV
<b>Purity</b>	> 80% as determined by SDS-PAGE and Coomassie blue staining
<b>Stability</b>	Stable for 3 months from receipt of products under proper storage and handling

 Tel: 1-631-559-9269    1-516-512-3133

 Email: [info@creative-biomart.com](mailto:info@creative-biomart.com)     Fax: 1-631-938-8127

 45-1 Ramsey Road, Shirley, NY 11967, USA

conditions.

**Storage** Store at -80 centigrade. Avoid repeated freeze-thaw cycles.

**Concentration** 50 µg/mL as determined by BCA

**Storage Buffer** 100 mM glycine, 25 mM Tris-HCl, pH 7.3.

## GENE INFORMATION

**Gene Name** TARM1 T cell-interacting, activating receptor on myeloid cells 1 [ Homo sapiens (human) ]

**Official Symbol** TARM1

**Synonyms** TARM1; T cell-interacting, activating receptor on myeloid cells 1; OLT-2; T-cell-interacting, activating receptor on myeloid cells protein 1; OSCAR-like transcript-2 protein

**Gene ID** 441864

**mRNA Refseq** NM\_001135686

**Protein Refseq** NP\_001129158

**MIM** 616802

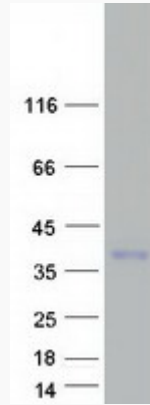
**UniProt ID** B6A8C7

 Tel: 1-631-559-9269 1-516-512-3133

 Email: [info@creative-biomart.com](mailto:info@creative-biomart.com)  Fax: 1-631-938-8127

 45-1 Ramsey Road, Shirley, NY 11967, USA

**SDS-PAGE**



 Tel: 1-631-559-9269 1-516-512-3133

 Email: [info@creative-biomart.com](mailto:info@creative-biomart.com)  Fax: 1-631-938-8127

 45-1 Ramsey Road, Shirley, NY 11967, USA