

Recombinant Human TAS1R1 protein, His&Myc-tagged

Cat. No. TAS1R1-2435H Lot. No. (See product label)

SPECIFICATION

Product Overview	Recombinant Human TAS1R1 protein(Q7RTX1)(21-567aa), fused with N-terminal His tag and C-terminal Myc tag, was expressed in E.coli.
Species	Human
Source	E.coli
ProteinLength	21-567aa
Form	If the delivery form is liquid, the default storage buffer is Tris/PBS-based buffer, 5%-50% glycerol. If the delivery form is lyophilized powder, the buffer before lyophilization is Tris/PBS-based buffer, 6% Trehalose, pH 8.0.
Molecular Mass	68.1 kDa
Purity	Greater than 85% as determined by SDS-PAGE.
Storage	Store at -20°C/-80°C upon receipt, aliquoting is necessary for mutiple use. Avoid repeated freeze-thaw cycles.
Reconstitution	We recommend that this vial be briefly centrifuged prior to opening to bring the contents to the bottom. Please reconstitute protein in deionized sterile water to a concentration of 0.1-1.0 mg/mL. We recommend to add 5-50% of glycerol (final concentration) and aliquot for long-term storage at -20°C/-80°C.

 Tel: 1-631-559-9269 1-516-512-3133

 Email: info@creative-biomart.com  Fax: 1-631-938-8127

 45-1 Ramsey Road, Shirley, NY 11967, USA

AA Sequence

FACHSTESSPDFTLPGDYLLAGLFPPLHSGCLQVRHRPEVTLCDRSCSFNEHGYHLF
 QAMRLGVEEINNSTALLPNITLGYQLYDVCSDSANVYATLRVLSLPGQHHELQGDLL
 HYSPTVLAVIGPDSTNRAATTAALLSPFLVPMISYAASSETLSVKRQYPSFLRTIPNDK
 YQVETMVLLLQKFGWTWISLVGSSDDYGQLGVQALENQATGGGICIAFKDIMPFS
 QVGDERMQCLMRHLAQAGATVVVVVFSSRQLARVFFESVVLTNLTGKVWVASEAWA
 LSRHITGVPGIQRIGMVLGVAIQKRAVPGLKAFEEAYARADKKAPRPCHKGSSWCSSN
 QLCRECQAFMAHTMPKLKAFSMSSAYNAYRAVYAVAHGLHQLLGCASGACSRGRV
 YPWQLLEQIHKVHFLHDKDTVAFNDNRDPLSSYNIIAWDWNGPKWFTFTVLGSSTWS
 PVQLNINETKIQWHGKDNQVPKSVCSDDCLEGHQRVVTGFHHCCFECVPCGAGTF
 LNKSDLYRCQPCGKEEWAPEGSQTCFPRTVVFLALREHTS

GENE INFORMATION

Gene Name [TAS1R1 taste receptor, type 1, member 1 \[Homo sapiens \]](#)

Official Symbol [TAS1R1](#)

Synonyms [TAS1R1](#); taste receptor, type 1, member 1; G protein coupled receptor 70 , GPR70; taste receptor type 1 member 1; T1R1; TR1; G protein-coupled receptor 70; G-protein coupled receptor 70; seven transmembrane helix receptor; GM148; GPR70;

Gene ID [80835](#)

mRNA Refseq [NM_138697](#)

Protein Refseq [NP_619642](#)

MIM [606225](#)

UniProt ID [Q7RTX1](#)

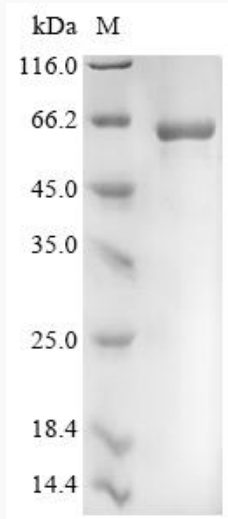
 Tel: 1-631-559-9269 1-516-512-3133

 Email: info@creative-biomart.com  Fax: 1-631-938-8127

 45-1 Ramsey Road, Shirley, NY 11967, USA



SDS-PAGE



Tel: 1-631-559-9269 1-516-512-3133

Email: info@creative-biomart.com Fax: 1-631-938-8127

45-1 Ramsey Road, Shirley, NY 11967, USA