

Recombinant Human TAS1R2 protein, His&Myc-tagged

Cat. No. TAS1R2-578H Lot. No. (See product label)

SPECIFICATION

Product Overview	Recombinant Human TAS1R2 protein(Q8TE23)(20-566aa), fused with N-terminal His tag and C-terminal Myc tag, was expressed in E.coli.
Species	Human
Source	E.coli
ProteinLength	20-566a.a.
Tag	His&Myc
Form	If the delivery form is liquid, the default storage buffer is Tris/PBS-based buffer, 5%-50% glycerol. If the delivery form is lyophilized powder, the buffer before lyophilization is Tris/PBS-based buffer, 6% Trehalose, pH 8.0.
Molecular Mass	67.6 kDa
Purity	Greater than 85% as determined by SDS-PAGE.
Storage	Store at -20°C/-80°C upon receipt, aliquoting is necessary for mutiple use. Avoid repeated freeze-thaw cycles.
Reconstitution	We recommend that this vial be briefly centrifuged prior to opening to bring the contents to the bottom. Please reconstitute protein in deionized sterile water to a concentration of 0.1-1.0 mg/mL.We recommend to add 5-50% of glycerol (final

 Tel: 1-631-559-9269 1-516-512-3133

 Email: info@creative-biomart.com  Fax: 1-631-938-8127

 45-1 Ramsey Road, Shirley, NY 11967, USA

concentration) and aliquot for long-term storage at -20°C/-80°C.

AA Sequence

EPAENSDFYLPGDYLLGGLFSLHANMKGIVHLNFLQVPMCKEYEVKVIGYNLMQAM
 RFAVEEINNDSSLLPGVLLGYEIVDVCYISNNVQPVLYFLAHEDNLLPIQEDYSNYISR
 VVAVIGPDNSESVMTVANFLSLFLLPQITYSAISDELDRDKVRFALLRTPPSADHHIEA
 MVQLMLHFRWNWIIVLVSSDTYGRDNGQLLGERVARRDICIAFQETLPTLQPNQNM
 TSEERQRLVTIVDKLQQSTARVVVVFSPDLTLYHFFNEVLRQNFTGAVWIASESWAI
 DPVLHNLTELRLHGTFLGITIQSVPIPGFSEFREWGPQAGPPPLSRTS QS SYTCNQEC
 DNCLNATLSFNTILRLSGERVVYSVYSAVYAVAHALHSLGCDKSTCTKRVVYPWQL
 LEEIWKNFTLLDHQIFFDPQGDVALHLEIVQWQWDRSQNPFSVASYYPLQRQLK
 NIQDISWHTINNTIPMSMCSKRCQSGQKKKPVGIHVCCFECIDCLPGTFLNHTEDEYE
 CQACPNNEWSYQSETSCFKRQLVFLEWHEAPT

GENE INFORMATION

Gene Name [TAS1R2 taste receptor, type 1, member 2 \[Homo sapiens \]](#)

Official Symbol [TAS1R2](#)

Synonyms [TAS1R2](#); taste receptor, type 1, member 2; G protein coupled receptor 71 , GPR71; taste receptor type 1 member 2; T1R2; TR2; sweet taste receptor T1R2; G protein-coupled receptor 71; G-protein coupled receptor 71; GPR71;

Gene ID [80834](#)

mRNA Refseq [NM_152232](#)

Protein Refseq [NP_689418](#)

MIM [606226](#)

 Tel: 1-631-559-9269 1-516-512-3133

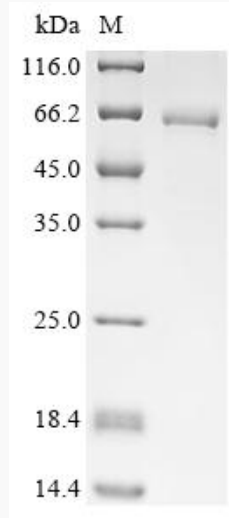
 Email: info@creative-biomart.com  Fax: 1-631-938-8127

 45-1 Ramsey Road, Shirley, NY 11967, USA

UniProt ID

Q8TE23

SDS-PAGE



 Tel: 1-631-559-9269 1-516-512-3133

 Email: info@creative-biomart.com  Fax: 1-631-938-8127

 45-1 Ramsey Road, Shirley, NY 11967, USA