

Active Recombinant Human TAS1R3 protein, His-tagged

Cat. No. TAS1R3-2751H Lot. No. (See product label)

SPECIFICATION

Product Overview	Active Recombinant Human TAS1R3 protein(Q7RTX0)(21-570 aa), fused with N-terminal His tag, was expressed in E.coli.
Species	Human
Source	E.coli
ProteinLength	21-570 aa
Form	PBS, pH7.4, containing 0.01% SKL, 1mM DTT, 5% Trehalose and Proclin300.
Bio-activity	Taste receptor type 1 member 3 (TAS1R3), responsible for mediating taste perception, is a G protein-coupled receptor (GPCR) expressed in gustatory cells located within the taste buds on the tongue. It can form a heterodimeric receptor with TAS1R1 to elicit the umami taste response, or it can bind with TAS1R2 to form a receptor for the sweet taste response, thus a functional binding ELISA assay was conducted to detect the interaction of recombinant human TAS1R3 and recombinant mouse TAS1R1. Briefly, biotin-linked TAS1R3 were diluted serially in PBS, with 0.01% BSA (pH 7.4). Duplicate samples of 100 ul were then transferred to TAS1R1-coated microtiter wells and incubated for 1h at 37°C. Wells were washed with PBST 3 times and incubation with Streptavidin-HRP for 30min, then wells were aspirated and washed 5 times. With the addition of substrate solution, wells were incubated 15-25 minutes at 37°C. Finally, add 50 μstop solution to the wells and read at 450 nm immediately. The binding activity of recombinant human TAS1R3 and recombinant

 Tel: 1-631-559-9269 1-516-512-3133

 Email: info@creative-biomart.com  Fax: 1-631-938-8127

 45-1 Ramsey Road, Shirley, NY 11967, USA

mouse TAS1R1 was shown, the EC50 for this effect is 0.31 ug/mL.

Molecular Mass 65.7kDa

Endotoxin <1.0EU per 1µg (determined by the LAL method).

Purity > 95%

Storage Avoid repeated freeze/thaw cycles. Store at 2-8°C for one month. Store at -20°C for 12 months. Aliquot and store at -80°C for 12 months.

Reconstitution Reconstitute in 10mM PBS (pH7.4) to a concentration of 0.1-1.0 mg/mL. Do not vortex.

GENE INFORMATION

Gene Name TAS1R3 taste receptor, type 1, member 3 [Homo sapiens]

Official Symbol TAS1R3

Synonyms TAS1R3; taste receptor, type 1, member 3; taste receptor type 1 member 3; T1R3; sweet taste receptor T1R3;

Gene ID 83756

mRNA Refseq NM_152228

Protein Refseq NP_689414

MIM 605865

 Tel: 1-631-559-9269 1-516-512-3133

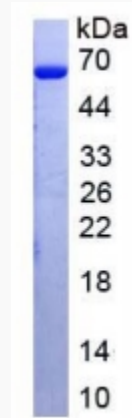
 Email: info@creative-biomart.com  Fax: 1-631-938-8127

 45-1 Ramsey Road, Shirley, NY 11967, USA

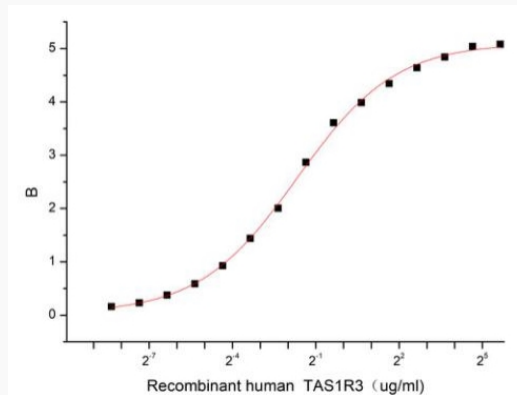
UniProt ID

Q7RTX0

SDS-PAGE



Activity



 Tel: 1-631-559-9269 1-516-512-3133

 Email: info@creative-biomart.com  Fax: 1-631-938-8127

 45-1 Ramsey Road, Shirley, NY 11967, USA