

Recombinant Human TAS1R3 protein, His&Myc-tagged

Cat. No. TAS1R3-3534H Lot. No. (See product label)

SPECIFICATION

Product Overview	Recombinant Human TAS1R3 protein(Q7RTX0)(21-570aa), fused with N-terminal His tag and C-terminal Myc tag, was expressed in E.coli.
Species	Human
Source	E.coli
ProteinLength	21-570aa
Form	If the delivery form is liquid, the default storage buffer is Tris/PBS-based buffer, 5%-50% glycerol. If the delivery form is lyophilized powder, the buffer before lyophilization is Tris/PBS-based buffer, 6% Trehalose, pH 8.0.
Molecular Mass	68.4 kDa
Purity	Greater than 90% as determined by SDS-PAGE.
Storage	Store at -20°C/-80°C upon receipt, aliquoting is necessary for mutiple use. Avoid repeated freeze-thaw cycles.
Reconstitution	We recommend that this vial be briefly centrifuged prior to opening to bring the contents to the bottom. Please reconstitute protein in deionized sterile water to a concentration of 0.1-1.0 mg/mL. We recommend to add 5-50% of glycerol (final concentration) and aliquot for long-term storage at -20°C/-80°C.

 Tel: 1-631-559-9269 1-516-512-3133

 Email: info@creative-biomart.com  Fax: 1-631-938-8127

 45-1 Ramsey Road, Shirley, NY 11967, USA

AA Sequence

APLCLSQQLRMKGDYVLGGLFPLGEAEEAGLSRTRPSSPVCTRFSSNGLLWALAM
 KMAVEEINNKS DLLPGLRLGYDLFDT CSEPVVAMKPSLMFLAKAGSRDIAAYCNYTQ
 YQPRVLAVIGPHSSELAMVTGKFFSFFLMPQVSYGASMELLSARETFPSFFRTVPSD
 RVQLTAAAE LLQEF GWNWVAALGSDDEYGRQGLSIF SALAAARGICIAHEGLVPLPR
 ADDSRLGKVQDVLHQVNQSSVQVLLFASVHAAHALFNYSISSRLSPKVWVASEAW
 LTSDLVMGLPGMAQMGTVLGFLQRGAQLHEFPQYVKTHLALATDPAFCSALGERE
 QGLEEDVVGQRCPQCDCITLQNVSAGLNHHQTFSVYAAVYSVAQALHNTLQCNAS
 GCPAQDPVKPWQLLENMYNLTFHVGGLPLRFDSSGNVDMEYDLKLWVWQGSVPR
 LHDVGRFNGSLRTERLKIRWHTSDNQKPVSRCSRQCQEGQVRRVKGFHSCCYDC
 VDCEAGSYRQNPDDIAC TFCGQDEWSPERSTRCFRRRSRFLAWGEP AVL

GENE INFORMATION

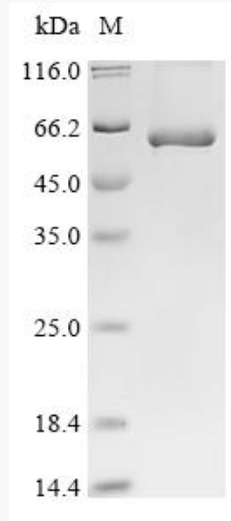
Gene Name	TAS1R3 taste receptor, type 1, member 3 [Homo sapiens]
Official Symbol	TAS1R3
Synonyms	TAS1R3; taste receptor, type 1, member 3; taste receptor type 1 member 3; T1R3; sweet taste receptor T1R3;
Gene ID	83756
mRNA Refseq	NM_152228
Protein Refseq	NP_689414
MIM	605865
UniProt ID	Q7RTX0

 Tel: 1-631-559-9269 1-516-512-3133

 Email: info@creative-biomart.com  Fax: 1-631-938-8127

 45-1 Ramsey Road, Shirley, NY 11967, USA

SDS-PAGE



 Tel: 1-631-559-9269 1-516-512-3133

 Email: info@creative-biomart.com  Fax: 1-631-938-8127

 45-1 Ramsey Road, Shirley, NY 11967, USA