

Recombinant Human TAS2R10 protein, GST-tagged

Cat. No. TAS2R10-4633H **Lot. No.** (See product label)

SPECIFICATION

| | |
|-------------------------|--|
| Product Overview | Recombinant Human TAS2R10 protein(148-227 aa), fused with N-terminal GST tag, was expressed in E.coli. |
| Species | Human |
| Source | E.coli |
| ProteinLength | 148-227 aa |
| Form | The purified protein was lyophilized from sterile phosphate-buffered saline (PBS: 58 mM Na ₂ HPO ₄ , 17 mM NaH ₂ PO ₄ , 68 mM NaCl, pH 8.0). Prior to lyophilization, 5% (w/v) trehalose and 5% (w/v) mannitol were incorporated as cryoprotective excipients. |
| AASequence | AKILNDYKMKNDTVWDLNMYKSEYFIKQILLNLGVIFFFTLSLITCIFIISLWRHNRQM QSNVTGLRDSNTEAHVKAMK |
| Purity | 85%, by SDS-PAGE with Coomassie Brilliant Blue staining. |
| Storage | Store at 2-8°C for 1-2 weeks. Aliquot and store at -20°C to -80°C for up to 3 months, reconstitution with sterile water and addition of an equal volume of glycerol. Avoid repeat freeze-thaw cycles. |
| Reconstitution | Dissolve the product in 200 µl sterile water to achieve a working concentration of 0.25 g/ |

 Tel: 1-631-559-9269 1-516-512-3133

 Email: info@creative-biomart.com  Fax: 1-631-938-8127

 45-1 Ramsey Road, Shirley, NY 11967, USA

µl. If experimental compatibility allows, mix the aqueous solution with an equal volume of glycerol (1:1 ratio) after initial reconstitution.

GENE INFORMATION

| | |
|------------------------|---|
| Gene Name | TAS2R10 taste receptor, type 2, member 10 [Homo sapiens] |
| Official Symbol | TAS2R10 |
| Synonyms | TAS2R10; taste receptor, type 2, member 10; taste receptor type 2 member 10; T2R10; TRB2; taste receptor family B member 2; taste receptor, family B, member 2; MGC126811; MGC126813; |
| Gene ID | 50839 |
| mRNA Refseq | NM_023921 |
| Protein Refseq | NP_076410 |
| MIM | 604791 |
| UniProt ID | Q9NYW0 |

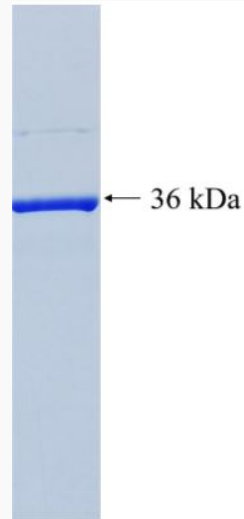
 Tel: 1-631-559-9269 1-516-512-3133

 Email: info@creative-biomart.com  Fax: 1-631-938-8127

 45-1 Ramsey Road, Shirley, NY 11967, USA



SDS-PAGE



Tel: 1-631-559-9269 1-516-512-3133

Email: info@creative-biomart.com Fax: 1-631-938-8127

45-1 Ramsey Road, Shirley, NY 11967, USA