

## Recombinant Human TAS2R10 protein, His-KSI-tagged

Cat. No. TAS2R10-6874H Lot. No. (See product label)

### SPECIFICATION

<b>Product Overview</b>	Recombinant Human TAS2R10 protein(Q9NYW0)(64-100aa), fused with N-terminal His and KSI tag, was expressed in E.coli.
<b>Species</b>	Human
<b>Source</b>	E.coli
<b>ProteinLength</b>	64-100a.a.
<b>Tag</b>	His-KSI
<b>Form</b>	If the delivery form is liquid, the default storage buffer is Tris/PBS-based buffer, 5%-50% glycerol. If the delivery form is lyophilized powder, the buffer before lyophilization is Tris/PBS-based buffer, 6% Trehalose, pH 8.0.
<b>Molecular Mass</b>	19.6 kDa
<b>Purity</b>	Greater than 90% as determined by SDS-PAGE.
<b>Storage</b>	Store at -20°C/-80°C upon receipt, aliquoting is necessary for mutiple use. Avoid repeated freeze-thaw cycles.
<b>Reconstitution</b>	We recommend that this vial be briefly centrifuged prior to opening to bring the contents to the bottom. Please reconstitute protein in deionized sterile water to a concentration of 0.1-1.0 mg/mL.We recommend to add 5-50% of glycerol (final

 Tel: 1-631-559-9269 1-516-512-3133

 Email: [info@creative-biomart.com](mailto:info@creative-biomart.com)  Fax: 1-631-938-8127

 45-1 Ramsey Road, Shirley, NY 11967, USA

concentration) and aliquot for long-term storage at -20°C/-80°C.

**AA Sequence** DGFIIQIFSPNIYASGNLIEYISYFWVIGNQSSMWFAT

## GENE INFORMATION

**Gene Name** TAS2R10 taste receptor, type 2, member 10 [ Homo sapiens ]

**Official Symbol** TAS2R10

**Synonyms** TAS2R10; taste receptor, type 2, member 10; taste receptor type 2 member 10; T2R10; TRB2; taste receptor family B member 2; taste receptor, family B, member 2; MGC126811; MGC126813;

**Gene ID** 50839

**mRNA Refseq** NM\_023921

**Protein Refseq** NP\_076410

**MIM** 604791

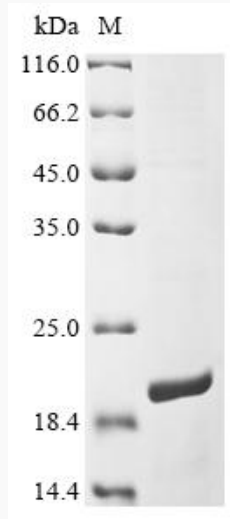
**UniProt ID** Q9NYW0

 Tel: 1-631-559-9269 1-516-512-3133

 Email: [info@creative-biomart.com](mailto:info@creative-biomart.com)  Fax: 1-631-938-8127

 45-1 Ramsey Road, Shirley, NY 11967, USA

**SDS-PAGE**



 Tel: 1-631-559-9269 1-516-512-3133

 Email: [info@creative-biomart.com](mailto:info@creative-biomart.com)  Fax: 1-631-938-8127

 45-1 Ramsey Road, Shirley, NY 11967, USA