

Recombinant Human TAS2R13 Full Length Transmembrane protein, His-tagged

Cat. No. TAS2R13-2904H **Lot. No.** (See product label)

SPECIFICATION

Product Overview

Recombinant Human TAS2R13 protein(Q9NYV9)(1-303aa), fused with N-terminal His tag, was expressed in in vitro E. coli expression system.

Species

Human

Source

E.coli

ProteinLength

1-303aa

Form

If the delivery form is liquid, the default storage buffer is Tris/PBS-based buffer, 5%-50% glycerol.
If the delivery form is lyophilized powder, the buffer before lyophilization is Tris/PBS-based buffer, 6% Trehalose, pH 8.0.

Molecular Mass

36.6 kDa

AA Sequence

MESALPSIFTLVIIAEFIIGNLSNGFIVLINCIDWVSKRELSSVDKLLIILAI SRIGLIWEILV
SWFLALHYLAIFVSGTGLRIMIFSWIVSNHFNLWLATIFSIFYLLKIASFSSPAFLYLK W
RVNKVILMILLGTLVFLFLNLIQINMHIKDWLD RYERNTTWNFSMSDFETFSVSVKFTM
TMFSLTPFTVAFISFLLIFSLQKHLQKMLN YKGHRDPRTKVHTNALKIVISFLLFYAS
FFLCVLISWISELYQNTVIYMLCETIGVFSPSSH SFLILGNAKLRQAFLLVAAKVWAK
R

Purity

Greater than 85% as determined by SDS-PAGE.

 Tel: 1-631-559-9269 1-516-512-3133

 Email: info@creative-biomart.com  Fax: 1-631-938-8127

 45-1 Ramsey Road, Shirley, NY 11967, USA

Storage	Store at -20°C/-80°C upon receipt, aliquoting is necessary for mutiple use. Avoid repeated freeze-thaw cycles.
Reconstitution	Please reconstitute protein in deionized sterile water to a concentration of 0.1-1.0 mg/mL. We recommend to add 5-50% of glycerol (final concentration) and aliquot for long-term storage at -20°C/-80°C.

GENE INFORMATION

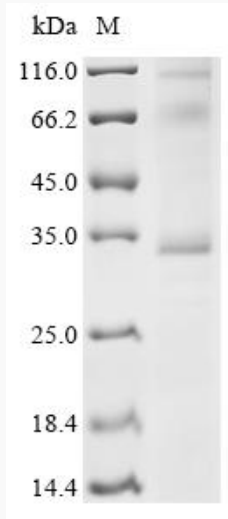
Gene Name	TAS2R13 taste receptor, type 2, member 13 [Homo sapiens]
Official Symbol	TAS2R13
Synonyms	TAS2R13; taste receptor, type 2, member 13; taste receptor type 2 member 13; T2R13; TRB3; taste receptor family B member 3; taste receptor, family B, member 3;
Gene ID	50838
mRNA Refseq	NM_023920
Protein Refseq	NP_076409
MIM	604792
UniProt ID	Q9NYV9

 Tel: 1-631-559-9269 1-516-512-3133

 Email: info@creative-biomart.com  Fax: 1-631-938-8127

 45-1 Ramsey Road, Shirley, NY 11967, USA

SDS-PAGE



 Tel: 1-631-559-9269 1-516-512-3133

 Email: info@creative-biomart.com  Fax: 1-631-938-8127

 45-1 Ramsey Road, Shirley, NY 11967, USA