

# Recombinant Human TAT Protein, Myc/DDK-tagged, C13 and N15-labeled

**Cat. No.** TAT-5256H    **Lot. No.** (See product label)

## SPECIFICATION

<b>Product Overview</b>	TAT MS Standard C13 and N15-labeled recombinant protein (NP_000344) with a C-terminal MYC/DDK tag, was expressed in HEK293 cells.
<b>Species</b>	Human
<b>Source</b>	HEK293
<b>Description</b>	This nuclear gene encodes a mitochondrial protein tyrosine aminotransferase which is present in the liver and catalyzes the conversion of L-tyrosine into p-hydroxyphenylpyruvate. Mutations in this gene cause tyrosinemia (type II, Richner-Hanhart syndrome), a disorder accompanied by major skin and corneal lesions, with possible cognitive disability. A regulator gene for tyrosine aminotransferase is X-linked.
<b>Molecular Mass</b>	50.4 kDa
<b>AA Sequence</b>	MDPYMIQMSSKGNLSSILDVHVNVGGRSSVPGMKMKGRKARWSVRPSDMAKKTFFNP IRAIVDNMKVKPNPNKTMISLSIGDPTVFGNLPTDPEVTQAMKDALDSGKYNGYAPSI GFLSSREEIASYYHCPEAPLEAKDVILTSGCSQAIDLCLAVLANPGQNILVPRPGFSLY KTLAESMGIEVKLYNLLPEKSWEIDLKQLEYLIDEKTAACLIVNPNPCGSVFSKRHL QKILAVAAARQCVPILADEIYGDMVFSCKYEPLATLSTDVPILSCGGLAKRWLVPGW RLGWILIHDRRDIFGNEIRDGLVKLSQRILGPCTIVQGALKSILCRTPGEFYHNTLSFLK SNADLCYGALAAIPGLRPVVRPSGAMYL MVGIEMEHFPEFENDVEFTERLVAEQSVH

 Tel: 1-631-559-9269    1-516-512-3133

 Email: [info@creative-biomart.com](mailto:info@creative-biomart.com)     Fax: 1-631-938-8127

 45-1 Ramsey Road, Shirley, NY 11967, USA

CLPATCFEYPNFIRVVITVPEVMMLEACSRIQEFCEQHYHCAEGSQEECDKTRTRPL  
EQKLISEEDLAANDILDYKDDDDKV

**Purity** > 80% as determined by SDS-PAGE and Coomassie blue staining

**Stability** Stable for 3 months from receipt of products under proper storage and handling conditions.

**Storage** Store at -80 centigrade. Avoid repeated freeze-thaw cycles.

**Concentration** 50 µg/mL as determined by BCA

**Storage Buffer** 100 mM glycine, 25 mM Tris-HCl, pH 7.3.

## GENE INFORMATION

**Gene Name** TAT tyrosine aminotransferase [ Homo sapiens (human) ]

**Official Symbol** TAT

**Synonyms** TAT; tyrosine aminotransferase; tyrosine aminotransferase, cytosolic; L-tyrosine:2-oxoglutarate aminotransferase;

**Gene ID** 6898

**mRNA Refseq** NM\_000353

**Protein Refseq** NP\_000344

**MIM** 613018

 Tel: 1-631-559-9269 1-516-512-3133

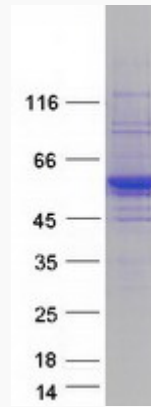
 Email: [info@creative-biomart.com](mailto:info@creative-biomart.com)  Fax: 1-631-938-8127

 45-1 Ramsey Road, Shirley, NY 11967, USA

UniProt ID

P17735

SDS-PAGE



 Tel: 1-631-559-9269 1-516-512-3133

 Email: [info@creative-biomart.com](mailto:info@creative-biomart.com)  Fax: 1-631-938-8127

 45-1 Ramsey Road, Shirley, NY 11967, USA