

Recombinant Full Length Human TAT Protein, C-Flag-tagged

Cat. No. TAT-999HFL Lot. No. (See product label)

SPECIFICATION

Product Overview	Recombinant Full Length Human TAT Protein, fused to Flag-tag at C-terminus, was expressed in Mammalian cells.
Species	Human
Source	Mammalian Cells
Description	This nuclear gene encodes a mitochondrial protein tyrosine aminotransferase which is present in the liver and catalyzes the conversion of L-tyrosine into p-hydroxyphenylpyruvate. Mutations in this gene cause tyrosinemia (type II, Richner-Hanhart syndrome), a disorder accompanied by major skin and corneal lesions, with possible cognitive disability. A regulator gene for tyrosine aminotransferase is X-linked.
Form	25 mM Tris HCl, pH 7.3, 100 mM glycine, 10% glycerol.
Molecular Mass	50.2 kDa
AA Sequence	MDPYMIQMSSKGNLSSILDVHVNVGGRSSVPGKMKGRKARWSVRPSDMAKKTFFNP IRAIVDNMKVKPNPN KTMISLSIGDPTVFGNLPTDPEVTQAMKDALDSGKYNGYAPS IGFLSSREEIASYYHCPEAPLEAKDVIL TSGCSQAIDLCLAVLANPGQNILVPRPGFSL YKTLAESMGIEVKLYNLLPEKSWEIDLKQLEYLIDEKTA CLIVNNPSNPCGSVFSKRH LQKILAVAARQCVPILADEIYGDMVFSDCKYEPLATLSTDVPILSCGGLAK RVLVPG WRLGWILIHDRRDIFGNEIRDGLVKLSQRILGPCTIVQGALKSILCRTPGEFYHNTLSF LKSNA DLCYGALAAIPGLRPVRPSGAMYLMVGIEMEHFPEFENDVEFTERLVAEQS

 Tel: 1-631-559-9269 1-516-512-3133

 Email: info@creative-biomart.com  Fax: 1-631-938-8127

 45-1 Ramsey Road, Shirley, NY 11967, USA

VHCLPATCFEYPNFIRVVI
 TVPEVMMLEACSRIQEFCEQHYHCAEGSQEECDKTRTRPLEQKLISEEDLAANDILD
 YKDDDDKV

Purity > 80% as determined by SDS-PAGE and Coomassie blue staining.

Stability Stable for 12 months from the date of receipt of the product under proper storage and handling conditions. Avoid repeated freeze-thaw cycles.

Storage Store at -80 centigrade.

Concentration >50 ug/mL as determined by microplate BCA method.

Preparation Recombinant protein was captured through anti-DDK affinity column followed by conventional chromatography steps.

Protein Families Druggable Genome, Embryonic stem cells, ES Cell Differentiation/IPS

Protein Pathways Cysteine and methionine metabolism, Metabolic pathways, Phenylalanine, tyrosine and tryptophan biosynthesis, Phenylalanine metabolism, Tyrosine metabolism, Ubiquinone and other terpenoid-quinone biosynthesis

Full Length Full L.

GENE INFORMATION

Gene Name TAT tyrosine aminotransferase [Homo sapiens (human)]

Official Symbol TAT

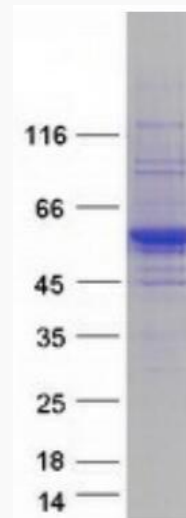
Synonyms tyrosine aminotransferase; tyrosine aminotransferase, cytosolic

 Tel: 1-631-559-9269 1-516-512-3133

 Email: info@creative-biomart.com  Fax: 1-631-938-8127

 45-1 Ramsey Road, Shirley, NY 11967, USA

Gene ID	6898
mRNA Refseq	NM_000353.3
Protein Refseq	NP_000344.1
MIM	613018
UniProt ID	P17735



Coomassie blue staining of purified TAT protein.

Tel: 1-631-559-9269 1-516-512-3133

Email: info@creative-biomart.com Fax: 1-631-938-8127

45-1 Ramsey Road, Shirley, NY 11967, USA