

Recombinant Full Length Human TBC1D5 Protein, C-Flag-tagged

Cat. No. TBC1D5-1217HFL **Lot. No.** (See product label)

SPECIFICATION

Product Overview	Recombinant Full Length Human TBC1D5 Protein, fused to Flag-tag at C-terminus, was expressed in Mammalian cells.
Species	Human
Source	Mammalian Cells
Description	Enables AP-2 adaptor complex binding activity and retromer complex binding activity. Involved in several processes, including macroautophagy; positive regulation of receptor internalization; and retrograde transport, endosome to Golgi. Located in Golgi apparatus; autophagosome; and endosome membrane. Part of retromer complex. Colocalizes with AP-2 adaptor complex and Atg1/ULK1 kinase complex.
Form	25 mM Tris HCl, pH 7.3, 100 mM glycine, 10% glycerol.
Molecular Mass	88.8 kDa
AA Sequence	<p>MYHSLSETRHPLQPEEQEVGIDPLSSYSNKSGGDSNKNRRTSSTLDSEGTFNYSYR KEWEELFVNNNYLA TIRQKGINGQLRSSRFRSICWKLFLCVLPQDKSQWISRIEELR AWYSNIKEIHITNPRKVVGQQDLMINN PLSQDEGLWLNKFFQDKELRSMIEQDVKR TFPEMQFFQQENVRKILTDVLFYARENEQLLYKQGMHELL APIVFLHCDHQAFLH ASESAPSEEMKTVLNPEYLEHDAYAVFSQLMETAEPWFSTFEHDGQKGGKETLM T PIPFARPQDLGPTIAIVTKVNQIQDHLLKKHDIELYMHLNRLEIAPQIYGLRWVRLLFGR EFPLQDLLV VWDALFADGLSLGLVDYIFVAMLLYIRDALISSNYQTCLGLLMHYFFIG</p>

 Tel: 1-631-559-9269 1-516-512-3133

 Email: info@creative-biomart.com  Fax: 1-631-938-8127

 45-1 Ramsey Road, Shirley, NY 11967, USA

DVHSLILKALFLRDPKRNPRP VTYQFHPNLDYYKARGADLMNKSRTNAKGAPLNINK
 VSNSLINFGRKLISPAMAPGSAGGPVPGGNSSSS SSVVIPTRTSAEAPSHHLQQQQ
 QQQLMKSESMQVQLNKGLSSKNISSSPSVESLPGGREFTGSPSSAT KKDSFFS
 NISRSRSHSKTMGRKESEEELEAQISFLQGQLNDLDAMCKYCAKVMTHLVNIQDVI
 LQENLE KEDQILVSLAGLKQIKDILKGLRFNQSQLEAEENEQITIADNHYCSSGQQG
 GRGQQSVQMSGAIKQAS SETPGCTDRGNSDDFILISKDDDGGSSARGSFSGQAQP
 LRTLRTSGKSQAPVCSPLVFSPLMGPASASS
 SNPSSSPDDSSKDSGFTIVSPLDITRTRPLEQKLISEEDLAANDILDYKDDDDKV

Purity	> 80% as determined by SDS-PAGE and Coomassie blue staining.
Stability	Stable for 12 months from the date of receipt of the product under proper storage and handling conditions. Avoid repeated freeze-thaw cycles.
Storage	Store at -80 centigrade.
Concentration	>50 ug/mL as determined by microplate BCA method.
Preparation	Recombinant protein was captured through anti-DDK affinity column followed by conventional chromatography steps.
Full Length	Full L.

GENE INFORMATION

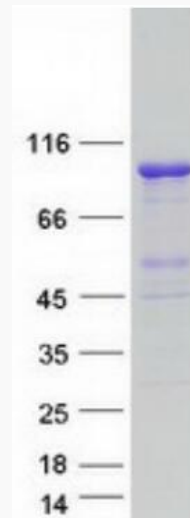
Gene Name	TBC1D5 TBC1 domain family member 5 [Homo sapiens (human)]
Official Symbol	TBC1D5
Synonyms	KIAA0210

 Tel: 1-631-559-9269 1-516-512-3133

 Email: info@creative-biomart.com  Fax: 1-631-938-8127

 45-1 Ramsey Road, Shirley, NY 11967, USA

Gene ID	9779
mRNA Refseq	NM_014744.2
Protein Refseq	NP_055559.1
MIM	615740
UniProt ID	Q92609



Coomassie blue staining of purified TBC1D5 protein.

Tel: 1-631-559-9269 1-516-512-3133

Email: info@creative-biomart.com Fax: 1-631-938-8127

45-1 Ramsey Road, Shirley, NY 11967, USA