

# Recombinant Human TBCB Protein, Myc/DDK-tagged, C13 and N15-labeled

**Cat. No.** TBCB-6220H    **Lot. No.** (See product label)

## SPECIFICATION

<b>Product Overview</b>	TBCB MS Standard C13 and N15-labeled recombinant protein (NP_001272) with a C-terminal MYC/DDK tag, was expressed in HEK293 cells.
<b>Species</b>	Human
<b>Source</b>	HEK293
<b>Description</b>	TBCB (Tubulin Folding Cofactor B) is a Protein Coding gene. Diseases associated with TBCB include Neuronopathy, Distal Hereditary Motor, Type VIII and Hypoparathyroidism-Retardation-Dysmorphism Syndrome. Among its related pathways are Metabolism of proteins and Cooperation of Prefoldin and TriC/CCT in actin and tubulin folding.
<b>Molecular Mass</b>	27.3 kDa
<b>AA Sequence</b>	MEVTGVSAPTVTVFISSSLNTRSEKRYRSRLTIAEFKCKLELLVGSPASCMELELYG VDDKFYSKLDQEDALLGSYPVDDGCRIVHIDHSGARLGEYEDVSRVEKYTISQEAYD QRQDTVRSFLKRSKLGRYNEEERAQQEAEAAQRLAEEKAQASSIPVGSRCVRAA GQSPRRGTVMYVGLTDFKPGYWIGVRYDEPLGKNDGSVNGKRYFECQAKYGAFVK PAVVTVGDFPEEDYGLDEITRTRPLEQKLISEEDLAANDILDYKDDDDKV
<b>Purity</b>	> 80% as determined by SDS-PAGE and Coomassie blue staining
<b>Stability</b>	Stable for 3 months from receipt of products under proper storage and handling conditions.

 Tel: 1-631-559-9269    1-516-512-3133

 Email: [info@creative-biomart.com](mailto:info@creative-biomart.com)     Fax: 1-631-938-8127

 45-1 Ramsey Road, Shirley, NY 11967, USA

<b>Storage</b>	Store at -80 centigrade. Avoid repeated freeze-thaw cycles.
<b>Concentration</b>	50 µg/mL as determined by BCA
<b>Storage Buffer</b>	100 mM glycine, 25 mM Tris-HCl, pH 7.3.
<b>GENE INFORMATION</b>	
<b>Gene Name</b>	TBCB tubulin folding cofactor B [ Homo sapiens (human) ]
<b>Official Symbol</b>	TBCB
<b>Synonyms</b>	TBCB; tubulin folding cofactor B; CKAP1, cytoskeleton associated protein 1, cytoskeleton associated protein 1; tubulin-folding cofactor B; CG22; CKAPI; tubulin-specific chaperone B; cytoskeleton associated protein 1; cytoskeleton-associated protein 1; cytoskeleton-associated protein CKAPI; CKAP1; MGC14625;
<b>Gene ID</b>	1155
<b>mRNA Refseq</b>	NM_001281
<b>Protein Refseq</b>	NP_001272
<b>MIM</b>	601303
<b>UniProt ID</b>	Q99426

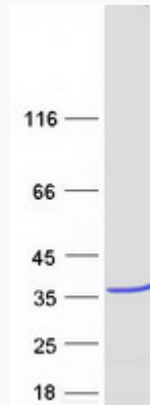
 Tel: 1-631-559-9269 1-516-512-3133

 Email: [info@creative-biomart.com](mailto:info@creative-biomart.com)  Fax: 1-631-938-8127

 45-1 Ramsey Road, Shirley, NY 11967, USA



**SDS-PAGE**



☎ Tel: 1-631-559-9269 1-516-512-3133

☎ Email: [info@creative-biomart.com](mailto:info@creative-biomart.com) ☎ Fax: 1-631-938-8127

☎ 45-1 Ramsey Road, Shirley, NY 11967, USA