

Recombinant Human TBCC Protein (2-345 aa), His-tagged

Cat. No. TBCC-825H Lot. No. (See product label)

SPECIFICATION

Product Overview	Recombinant Human TBCC Protein (2-345 aa) is produced by E. coli expression system. This protein is fused with a 6xHis tag at the N-terminal. Research Area: Signal Transduction. Protein Description: Full Length of Mature Protein.
Species	Human
Source	E.coli
ProteinLength	2-345 aa
Description	Tubulin-folding protein; involved in the final step of the tubulin folding pathway.
Form	Tris-based buffer, 50% glycerol
Molecular Mass	43.0 kDa
AA Sequence	ESVSCSAAAVRTGDMESQRDLSLVPERLQRREQERQLEVERRKQKRQNQEVEKEN SHFFVATFVRERAAVEELLERAESVERLEEAASRLQGLQKLINDSVFFLAAYDLRQG QEALARLQAALAERRRGLQPKKRFAFKTRGKDAASSTKVDAAPGIPPAVESIQDSPL PKKAEGDLGPSWVCGFSNLESQVLEKRASELHQRDVLLELSNCTVRLYGPNPNTLR LTKAHSCKLLCGPVSTSVFLEDCSDCVLAVACQQLRIHSTKDTRIFLQVTSRAIVEDC SGIQFAPYTWSYPEIDKDFESSGLDRSKNNWWDVDDFNWLARDMASPNWSILPEEE RNIQW
Purity	> 90% as determined by SDS-PAGE.

 Tel: 1-631-559-9269 1-516-512-3133

 Email: info@creative-biomart.com  Fax: 1-631-938-8127

 45-1 Ramsey Road, Shirley, NY 11967, USA

Notes	Repeated freezing and thawing is not recommended. Store working aliquots at 4 centigrade for up to one week.
Storage	The shelf life is related to many factors, storage state, buffer ingredients, storage temperature and the stability of the protein itself. Generally, the shelf life of liquid form is 6 months at -20 centigrade/-80 centigrade. The shelf life of lyophilized form is 12 months at -20 centigrade/-80 centigrade.
Concentration	A hardcopy of COA with concentration instruction is sent along with the products.

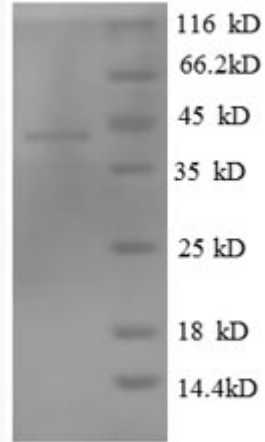
GENE INFORMATION

Gene Name	TBCC tubulin folding cofactor C [Homo sapiens]
Official Symbol	TBCC
Synonyms	TBCC; CFC; tubulin-folding cofactor C;
Gene ID	6903
mRNA Refseq	NM_003192
Protein Refseq	NP_003183
MIM	602971
UniProt ID	Q15814

 Tel: 1-631-559-9269 1-516-512-3133

 Email: info@creative-biomart.com  Fax: 1-631-938-8127

 45-1 Ramsey Road, Shirley, NY 11967, USA



(Tris-Glycine gel) Discontinuous SDS-PAGE (reduced) with 5% enrichment gel and 15% separation gel.

☎ Tel: 1-631-559-9269 1-516-512-3133

☎ Email: info@creative-biomart.com ☎ Fax: 1-631-938-8127

☎ 45-1 Ramsey Road, Shirley, NY 11967, USA