

# Recombinant Human TBCE Protein, Myc/DDK-tagged, C13 and N15-labeled

**Cat. No.** TBCE-4632H    **Lot. No.** (See product label)

## SPECIFICATION

<b>Product Overview</b>	TBCE MS Standard C13 and N15-labeled recombinant protein (NP_003184) with a C-terminal MYC/DDK tag, was expressed in HEK293 cells.
<b>Species</b>	Human
<b>Source</b>	HEK293
<b>Description</b>	Cofactor E is one of four proteins (cofactors A, D, E, and C) involved in the pathway leading to correctly folded beta-tubulin from folding intermediates. Cofactors A and D are believed to play a role in capturing and stabilizing beta-tubulin intermediates in a quasi-native confirmation. Cofactor E binds to the cofactor D/beta-tubulin complex; interaction with cofactor C then causes the release of beta-tubulin polypeptides that are committed to the native state. Two transcript variants encoding the same protein have been found for this gene.
<b>Molecular Mass</b>	59.3 kDa
<b>AA Sequence</b>	MSDTLTADVIGRRVEVNGEHATVRFAGVVPPVAGPWLGVWDNPERGKHDGSHE GTVYFKCRHPTGGSFIRPNKVNFGTDFLTAIKNRYVLEDGPEEDRKEQIVTIGNKPVE TIGFDSIMKQQSQLSKLQEVSLRNCAVSCAGEKGGVAEACPNIRKVDLSKNLLSSWD EVIHIADQLRHLEVLNVSENKLFPSGSVLTGTLSVLKVLVLNQTGITWAEVLRVAVAG CPGLEELYLESNNIFISERPTDVLQTVKLLDLSSNQLIDENQLYLIAHLPRLEQLILSDT GISSLHFPDAGIGCKTSMFPSLKYLVVNDNQISQWSFFNELEKLPSLRALSCLRNPLT

 Tel: 1-631-559-9269    1-516-512-3133

 Email: [info@creative-biomart.com](mailto:info@creative-biomart.com)     Fax: 1-631-938-8127

 45-1 Ramsey Road, Shirley, NY 11967, USA

KEDKEAETARLLIIASIGQLKTLNKCEILPEERRRAELDYRKAFGNEWKQAGGHKDPE  
 KNRLSEEFLLTAHPRYQFLCLKYGAPEDWELKTQQPLMLKNQLLTLKIKYPHQLDQKV  
 LEKQLPGSMTIQVKVGLLSRLLKVPVSDLLLSYESPKKPGREIELENDLKSLSQFYSVE  
 NGDCLLVWRTRTRPLEQKLISEEDLAANDILDYKDDDDKV

**Purity** > 80% as determined by SDS-PAGE and Coomassie blue staining

**Stability** Stable for 3 months from receipt of products under proper storage and handling conditions.

**Storage** Store at -80 centigrade. Avoid repeated freeze-thaw cycles.

**Concentration** 50 µg/mL as determined by BCA

**Storage Buffer** 100 mM glycine, 25 mM Tris-HCl, pH 7.3.

## GENE INFORMATION

**Gene Name** TBCE tubulin folding cofactor E [ Homo sapiens (human) ]

**Official Symbol** TBCE

**Synonyms** TBCE; tubulin folding cofactor E; KCS, Kenny Caffey syndrome, tubulin specific chaperone e; tubulin-specific chaperone E; HRD; KCS1; pac2; Kenny-Caffey syndrome; tubulin-folding cofactor E; KCS;

**Gene ID** 6905

**mRNA Refseq** NM\_003193

**Protein Refseq** NP\_003184

 Tel: 1-631-559-9269 1-516-512-3133

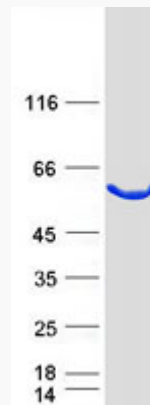
 Email: [info@creative-biomart.com](mailto:info@creative-biomart.com)  Fax: 1-631-938-8127

 45-1 Ramsey Road, Shirley, NY 11967, USA

**MIM** 604934

**UniProt ID** Q15813

**SDS-PAGE**



 Tel: 1-631-559-9269 1-516-512-3133

 Email: [info@creative-biomart.com](mailto:info@creative-biomart.com)  Fax: 1-631-938-8127

 45-1 Ramsey Road, Shirley, NY 11967, USA