

Recombinant Human TBCEL Protein, Myc/DDK-tagged, C13 and N15-labeled

Cat. No. TBCEL-3709H Lot. No. (See product label)

SPECIFICATION

| | |
|-------------------------|---|
| Product Overview | TBCEL MS Standard C13 and N15-labeled recombinant protein (NP_689928) with a C-terminal MYC/DDK tag, was expressed in HEK293 cells. |
| Species | Human |
| Source | HEK293 |
| Description | Acts as a regulator of tubulin stability. |
| Molecular Mass | 48.2 kDa |
| AA Sequence | MDQPSGRSFMQVLCEKYSPENFPYRRGPGMGVHVPATPQGSPMKDRLNLPVSLV LNSCGITCAGDEKEIAAFCAHVSELDLSDNKLEDWHEVSKIVSNVPQLEFLNLSSNPL NLSVLERTCAGSFSGVRKLVLNNSKASWETVHMILQELPDLEELFLCLNDYETVSCP SICCHSLKLLHITDNNLQDWTEIRKLGVMFPSLDTLVANNHLNAIEEPDDSLARLFPN LRSISLHKSGLQSWEDIDKLN SFPKLEEVRLGIPLLQPYTTEERRKLV IARLPSVSKL NGSVVTDGEREDSERFFIRYYVDVPQEEVPFRYHELITKYGKLEPLAEVDLRPQSSA KVEVHFNDQVEEMSIRLDQTV AELKKQLKTLVQLPTS NMLLYYFDHEAPFGPEEMKY SSRALHSFGIRDGDKIYVESKTKTRTRPLEQKLISEEDLAANDILDYKDDDDKV |
| Purity | > 80% as determined by SDS-PAGE and Coomassie blue staining |
| Stability | Stable for 3 months from receipt of products under proper storage and handling conditions. |

 Tel: 1-631-559-9269 1-516-512-3133

 Email: info@creative-biomart.com  Fax: 1-631-938-8127

 45-1 Ramsey Road, Shirley, NY 11967, USA

| | |
|-------------------------|--|
| Storage | Store at -80 centigrade. Avoid repeated freeze-thaw cycles. |
| Concentration | 50 µg/mL as determined by BCA |
| Storage Buffer | 100 mM glycine, 25 mM Tris-HCl, pH 7.3. |
| GENE INFORMATION | |
| Gene Name | TBCEL tubulin folding cofactor E-like [Homo sapiens (human)] |
| Official Symbol | TBCEL |
| Synonyms | TBCEL; tubulin folding cofactor E-like; leucine rich repeat containing 35, LRRC35, tubulin specific chaperone e like; tubulin-specific chaperone cofactor E-like protein; MGC10233; E-like; catastrophin; leucine rich repeat containing 35; tubulin-specific chaperone e-like; leucine-rich repeat-containing protein 35; EI; LRRC35; FLJ14177; |
| Gene ID | 219899 |
| mRNA Refseq | NM_152715 |
| Protein Refseq | NP_689928 |
| MIM | 610451 |
| UniProt ID | Q5QJ74 |

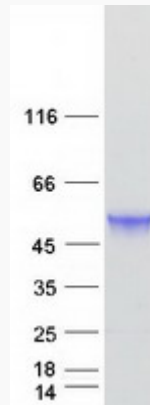
 Tel: 1-631-559-9269 1-516-512-3133

 Email: info@creative-biomart.com  Fax: 1-631-938-8127

 45-1 Ramsey Road, Shirley, NY 11967, USA



SDS-PAGE



Tel: 1-631-559-9269 1-516-512-3133

Email: info@creative-biomart.com Fax: 1-631-938-8127

45-1 Ramsey Road, Shirley, NY 11967, USA