

# Recombinant Human TBCEL Protein, Myc/DDK-tagged, C13 and N15-labeled

Cat. No. TBCEL-6087H Lot. No. (See product label)

## SPECIFICATION

<b>Product Overview</b>	TBCEL MS Standard C13 and N15-labeled recombinant protein (NP_001123519) with a C-terminal MYC/DDK tag, was expressed in HEK293 cells.
<b>Species</b>	Human
<b>Source</b>	HEK293
<b>Description</b>	Acts as a regulator of tubulin stability.
<b>Molecular Mass</b>	48.2 kDa
<b>AA Sequence</b>	MDQPSGRSFMQVLCEKYSPENFPYRRGPGMGVHVPATPQGSPMKDRLNLPVSLV LNSCGITCAGDEKEIAAFCAHVSELDLSDNKLEDWHEVSKIVSNVPQLEFLNLSSNPL NLSVLERTCAGSFGVVRKLVLNNSKASWETVHMILQELPDLEELFLCLNDYETVSCP SICCHSLKLLHITDNNLQDWTEIRKLGVMFPSLDTLVANNHLNAIEEPDDSLARLFPN LRSISLHKSGLQSWEDIDKLN SFPKLEEVRLGIPLLQPYTTEERRKLV IARLPSVSKL NGSVVTDGEREDSERFFIRYYVDVPQEEVPFRYHELITKYGKLEPLAEVDLRPQSSA KVEVHFNDQVEEMSIRLDQTV AELKKQLKTLVQLPTSNM LLYYFDHEAPFGPEEMKY SSRALHSFGIRDGDKIYVESKTKTRTRPLEQKLISEEDLAANDILDYKDDDDKV
<b>Purity</b>	> 80% as determined by SDS-PAGE and Coomassie blue staining
<b>Stability</b>	Stable for 3 months from receipt of products under proper storage and handling conditions.

 Tel: 1-631-559-9269 1-516-512-3133

 Email: [info@creative-biomart.com](mailto:info@creative-biomart.com)  Fax: 1-631-938-8127

 45-1 Ramsey Road, Shirley, NY 11967, USA

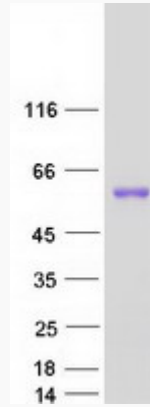
<b>Storage</b>	Store at -80 centigrade. Avoid repeated freeze-thaw cycles.
<b>Concentration</b>	50 µg/mL as determined by BCA
<b>Storage Buffer</b>	100 mM glycine, 25 mM Tris-HCl, pH 7.3.
<b>GENE INFORMATION</b>	
<b>Gene Name</b>	TBCEL tubulin folding cofactor E-like [ Homo sapiens (human) ]
<b>Official Symbol</b>	TBCEL
<b>Synonyms</b>	TBCEL; tubulin folding cofactor E-like; leucine rich repeat containing 35, LRRC35, tubulin specific chaperone e like; tubulin-specific chaperone cofactor E-like protein; MGC10233; E-like; catastrophin; leucine rich repeat containing 35; tubulin-specific chaperone e-like; leucine-rich repeat-containing protein 35; EI; LRRC35; FLJ14177;
<b>Gene ID</b>	219899
<b>mRNA Refseq</b>	NM_001130047
<b>Protein Refseq</b>	NP_001123519
<b>MIM</b>	610451
<b>UniProt ID</b>	Q5QJ74

 Tel: 1-631-559-9269 1-516-512-3133

 Email: [info@creative-biomart.com](mailto:info@creative-biomart.com)  Fax: 1-631-938-8127

 45-1 Ramsey Road, Shirley, NY 11967, USA

**SDS-PAGE**



 Tel: 1-631-559-9269 1-516-512-3133

 Email: [info@creative-biomart.com](mailto:info@creative-biomart.com)  Fax: 1-631-938-8127

 45-1 Ramsey Road, Shirley, NY 11967, USA