

## Recombinant Human TBL1 Protein, His-tagged

Cat. No. TBL1-118H Lot. No. (See product label)

### SPECIFICATION

<b>Product Overview</b>	Recombinant Human TBL1 Protein, fused to His-tag, was expressed in E.coli.
<b>Species</b>	Human
<b>Source</b>	E.coli
<b>Description</b>	<p>The protein encoded by this gene has sequence similarity with members of the WD40 repeat-containing protein family. The WD40 group is a large family of proteins, which appear to have a regulatory function. It is believed that the WD40 repeats mediate protein-protein interactions and members of the family are involved in signal transduction, RNA processing, gene regulation, vesicular trafficking, cytoskeletal assembly and may play a role in the control of cytotypic differentiation. This encoded protein is found as a subunit in corepressor SMRT (silencing mediator for retinoid and thyroid receptors) complex along with histone deacetylase 3 protein. This gene is located adjacent to the ocular albinism gene and it is thought to be involved in the pathogenesis of the ocular albinism with late-onset sensorineural deafness phenotype. Four transcript variants encoding two different isoforms have been found for this gene. This gene is highly similar to the Y chromosome TBL1Y gene.</p>
<b>Form</b>	Supplied as a 0.2 µm filtered solution in 20mM Tris, 0.15M NaCl (pH8.0)
<b>Molecular Mass</b>	~8.8 kDa
<b>AA Sequence</b>	MSITSDEVNFLVYRYLQESGFSSAATFGIESHISQSNINGTLVPPSALISILQKGLQY V EAEISINKDGT

 Tel: 1-631-559-9269 1-516-512-3133

 Email: [info@creative-biomart.com](mailto:info@creative-biomart.com)  Fax: 1-631-938-8127

 45-1 Ramsey Road, Shirley, NY 11967, USA

<b>Purity</b>	>90%
<b>Storage</b>	Store it under sterile conditions at -20 to -80 centigrade. It is recommended that the protein be aliquoted for optimal storage. Avoid repeated freeze-thaw cycles.
<b>Concentration</b>	0.8 mg/ml

## GENE INFORMATION

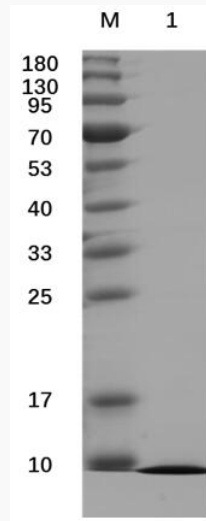
<b>Gene Name</b>	TBL1X transducin beta like 1 X-linked [ Homo sapiens (human) ]
<b>Official Symbol</b>	TBL1X
<b>Synonyms</b>	EBI; TBL1; CHNG8; SMAP55
<b>Gene ID</b>	6907
<b>mRNA Refseq</b>	NM_001139466
<b>Protein Refseq</b>	NP_001132938
<b>MIM</b>	300196
<b>UniProt ID</b>	O60907

 Tel: 1-631-559-9269 1-516-512-3133

 Email: [info@creative-biomart.com](mailto:info@creative-biomart.com)  Fax: 1-631-938-8127

 45-1 Ramsey Road, Shirley, NY 11967, USA

**SDS-PAGE**



12% reducing SDS-PAGE analysis of purified TBL1 (approximately 4 mg protein loaded).

 Tel: 1-631-559-9269 1-516-512-3133

 Email: [info@creative-biomart.com](mailto:info@creative-biomart.com)  Fax: 1-631-938-8127

 45-1 Ramsey Road, Shirley, NY 11967, USA