

Recombinant Human TBL3 protein, GST-tagged

Cat. No. TBL3-6874H Lot. No. (See product label)

SPECIFICATION

| | |
|-------------------------|--|
| Product Overview | Recombinant Human TBL3 protein(591-720 aa), fused with N-terminal GST tag, was expressed in E. coli. |
| Species | Human |
| Source | E. coli |
| ProteinLength | 591-720 aa |
| Form | The purified protein was lyophilized from sterile phosphate-buffered saline (PBS: 58 mM Na ₂ HPO ₄ , 17 mM NaH ₂ PO ₄ , 68 mM NaCl, pH 8.0). Prior to lyophilization, 5% (w/v) trehalose and 5% (w/v) mannitol were incorporated as cryoprotective excipients. The protein was eluted with a buffer containing 100 mM reduced glutathione (GSH). |
| AASequence | TIKNNECVRTLDAHEDKVVWGLHCSRLDDHALTGASDSRVILWKDVTEAEQAEQAR QEEQVVRQQELDNLLHEKRYLRALGLAISLDRPHTVLTVIQAIRRDPEACEKLEATML RLRRDQKEALLRFCVT |
| Purity | 85%, by SDS-PAGE. |
| Storage | Store at 2-8°C for 1-2 weeks. Aliquot and store at -20°C to -80°C for up to 3 months, reconstitution with sterile water and addition of an equal volume of glycerol. Avoid repeat freeze-thaw cycles. |

 Tel: 1-631-559-9269 1-516-512-3133

 Email: info@creative-biomart.com  Fax: 1-631-938-8127

 45-1 Ramsey Road, Shirley, NY 11967, USA

Reconstitution It is recommended that sterile water be added to the vial to prepare a stock solution of 0.25 ug/ul. Centrifuge the vial at 4°C before opening to recover the entire contents.

GENE INFORMATION

Gene Name TBL3 transducin (beta)-like 3 [Homo sapiens]

Official Symbol TBL3

Synonyms TBL3; transducin (beta)-like 3; transducin beta-like protein 3; SAZD; UTP13; WD-repeat protein SAZD; WD repeat-containing protein SAZD;

mRNA Refseq [NM_006453](#)

Protein Refseq [NP_006444](#)

MIM [605915](#)

UniProt ID [Q12788](#)

Gene ID [10607](#)

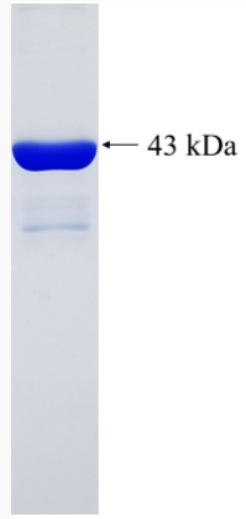
 Tel: 1-631-559-9269 1-516-512-3133

 Email: info@creative-biomart.com  Fax: 1-631-938-8127

 45-1 Ramsey Road, Shirley, NY 11967, USA



SDS-PAGE



Tel: 1-631-559-9269 1-516-512-3133

Email: info@creative-biomart.com Fax: 1-631-938-8127

45-1 Ramsey Road, Shirley, NY 11967, USA