

Recombinant Human TBX10 Protein, Myc/DDK-tagged, C13 and N15-labeled

Cat. No. TBX10-4871H Lot. No. (See product label)

SPECIFICATION

Product Overview	TBX10 MS Standard C13 and N15-labeled recombinant protein (NP_005986) with a C-terminal MYC/DDK tag, was expressed in HEK293 cells.
Species	Human
Source	HEK293
Description	This gene encodes a member of the T-box family of transcription factors. These transcription factors share a DNA-binding domain called the T-box, and play a role in several developmental processes including early embryonic cell fate and organogenesis. The encoded protein is a member of the T-box 1 subfamily. Mutations in this gene are thought to be a cause of isolated cleft lip with or without cleft palate.
Molecular Mass	42.3 kDa
AA Sequence	MAAFLSAGLGILAPSETYPLPTTSSGWEPRLGSPFPSPGCTSSSTGAQAVAEP TGQG PKNPRVSRVTVQLEMKPLWEEFNQLGTEMIVTKAGRRMFPPFQVKILGMDSLADYA LLMDFIPLDDKRYRYAFHSSAWLVAGKADPATPGRVHFHPDSPA KGAQWMRQIVSF DKLKL TNNLLDDNGHIILNSMHRYQPRFHVV FVDPRKDSERYAQENFKSFIFTETQFT AVTAYQNHRITQLKIASNPFAGKFRESLDLSDWPVAPRPLLSV PARSHSSLSPCVLKG ATDREKDPNKASASTSKTPAWLHHQLLPPEVLLAPATYRPV TYQSLYSGAPSHLGI PRTRPAPYPLNIRARDRQGG LPLPAGLG LLSPTVVCLGPGQDSQTRTRPLEQKLIS EEDLAANDILDYKDDDDKV

 Tel: 1-631-559-9269 1-516-512-3133

 Email: info@creative-biomart.com  Fax: 1-631-938-8127

 45-1 Ramsey Road, Shirley, NY 11967, USA

Purity	> 80% as determined by SDS-PAGE and Coomassie blue staining
Stability	Stable for 3 months from receipt of products under proper storage and handling conditions.
Storage	Store at -80 centigrade. Avoid repeated freeze-thaw cycles.
Concentration	50 µg/mL as determined by BCA
Storage Buffer	100 mM glycine, 25 mM Tris-HCl, pH 7.3.

GENE INFORMATION

Gene Name	TBX10 T-box 10 [Homo sapiens (human)]
Official Symbol	TBX10
Synonyms	TBX10; T-box 10; T box 7, TBX7; T-box transcription factor TBX10; TBX13; T-box 7; T-box protein 10; T-box-containing transcriptional activator; TBX7;
Gene ID	347853
mRNA Refseq	NM_005995
Protein Refseq	NP_005986
MIM	604648
UniProt ID	O75333

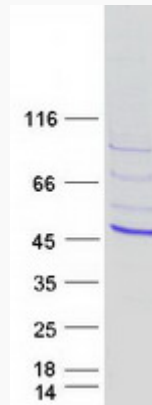
 Tel: 1-631-559-9269 1-516-512-3133

 Email: info@creative-biomart.com  Fax: 1-631-938-8127

 45-1 Ramsey Road, Shirley, NY 11967, USA



SDS-PAGE



Tel: 1-631-559-9269 1-516-512-3133

Email: info@creative-biomart.com Fax: 1-631-938-8127

45-1 Ramsey Road, Shirley, NY 11967, USA