

## Recombinant Human TBXAS1 protein, His-tagged

**Cat. No.** TBXAS1-7842H    **Lot. No.** (See product label)

### SPECIFICATION

<b>Product Overview</b>	Recombinant Human TBXAS1 protein(178-466 aa), fused with N-terminal His tag, was expressed in E. coli.
<b>Species</b>	Human
<b>Source</b>	E.coli
<b>ProteinLength</b>	178-466 aa
<b>Form</b>	The purified protein was Lyophilized from sterile PBS (58mM Na <sub>2</sub> HPO <sub>4</sub> , 17mM NaH <sub>2</sub> PO <sub>4</sub> , 68mM NaCl, pH7.4). 5 % trehalose and 5 % mannitol are added as protectant before lyophilization.
<b>Storage</b>	Short-term storage: Store at 2-8°C for (1-2 weeks). Long-term storage: Aliquot and store at -20°C to -80°C for up to 3 months, reconstitution with sterile water and addition of an equal volume of glycerol. Avoid repeat freeze-thaw cycles.
<b>AA Sequence</b>	NKNRDELNGFFNKLIRNVIALRDQQAAEERRRDFLQMVLDARHSASPMGVQDFDIV RDVFSSTGCKPNPSRQHQPSPMARPLTVDEIVGQAFIFLIAGYEIITNTLSFATYLLAT NPDCQEKLLREVDVFKEKHMAPEFCSLEEGLPYLDMVIAETLRMYPPAFRFTREAA QDCEVLGQRIPAGAVLEMAVGALHHDPEHWSPETFNPERFTAEARQQHRPFTYL PFGAGPRSCLVRLGLLEVKLTLHVLHKFRFQACPETQVPLQLLESKSALGPKNGVY IKIVSR
<b>Purity</b>	90%, by SDS-PAGE with Coomassie Brilliant Blue staining.

 Tel: 1-631-559-9269    1-516-512-3133

 Email: [info@creative-biomart.com](mailto:info@creative-biomart.com)     Fax: 1-631-938-8127

 45-1 Ramsey Road, Shirley, NY 11967, USA

## GENE INFORMATION

**Official Symbol** [TBXAS1](#)

**Synonyms**

TBXAS1; thromboxane A synthase 1 (platelet); thromboxane A synthase 1 (platelet, cytochrome P450, subfamily V); thromboxane-A synthase; CYP5; CYP5A1; cytochrome P450; family 5; subfamily A; polypeptide 1; THAS; TS; TXAS; TXS; TXA synthase; cytochrome P450 5A1; platelet, cytochrome P450, subfamily V; cytochrome P450, family 5, subfamily A, polypeptide 1; thromboxane A synthase 1 (platelet, cytochrome P450, family 5, subfamily A); GHOSAL; BDPLT14; FLJ52771;

**Gene ID** [6916](#)

**mRNA Refseq** [NM\\_001061](#)

**Protein Refseq** [NP\\_001052](#)

**MIM** [274180](#)

**UniProt ID** [P24557](#)

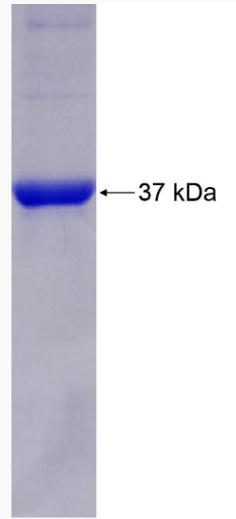
 Tel: 1-631-559-9269 1-516-512-3133

 Email: [info@creative-biomart.com](mailto:info@creative-biomart.com)  Fax: 1-631-938-8127

 45-1 Ramsey Road, Shirley, NY 11967, USA



SDS-PAGE



Tel: 1-631-559-9269 1-516-512-3133

Email: [info@creative-biomart.com](mailto:info@creative-biomart.com) Fax: 1-631-938-8127

45-1 Ramsey Road, Shirley, NY 11967, USA