

## Recombinant Human TCEA3 protein, His-tagged

Cat. No. TCEA3-6753H Lot. No. (See product label)

### SPECIFICATION

<b>Product Overview</b>	Recombinant Human TCEA3 protein(1-348 aa), fused with N-terminal His tag, was expressed in E. coli.
<b>Species</b>	Human
<b>Source</b>	E.coli
<b>ProteinLength</b>	1-348 aa
<b>Form</b>	The purified protein was Lyophilized from sterile PBS (58mM Na <sub>2</sub> HPO <sub>4</sub> , 17mM NaH <sub>2</sub> PO <sub>4</sub> , 68mM NaCl, pH7.4). 5 % trehalose and 5 % mannitol are added as protectant before lyophilization.
<b>Storage</b>	Short-term storage: Store at 2-8°C for (1-2 weeks). Long-term storage: Aliquot and store at -20°C to -80°C for up to 3 months, reconstitution with sterile water and addition of an equal volume of glycerol. Avoid repeat freeze-thaw cycles.
<b>AA Sequence</b>	<p>MGQEEELLRIAKKLEKMVARKNTEGALDLLKHLHSCQMSIQLLQTTRIGVAVNGVRK            HCSDKEVVSLAKVLIKNWKRLLDSPGPPKGEKGEEREKAKKKEKGLECSDWKPEAG            LSPPRKKREDPKTRRDSVDSKSSASSSPKRPSVERSNSSKSKAESP KTPSSPLTPT            FASSMCLLAPCYLTGDSVRDKCVELLSAALKADDDYKDYGVNCDKMASEIEDHIYQ            ELKSTDMKYRNRVRSRISNLK DPRNPGLRRNVLSGAISAGLIAKMTAEEMASDELRE            LRNAMTQEAIREHQMAKTGGTTTDLFQCSKCKKKNCTYNQVQTRSAD EPM TTFVLC            NECGNRWKFC</p>

 Tel: 1-631-559-9269 1-516-512-3133

 Email: [info@creative-biomart.com](mailto:info@creative-biomart.com)  Fax: 1-631-938-8127

 45-1 Ramsey Road, Shirley, NY 11967, USA

**Purity** 85%, by SDS-PAGE with Coomassie Brilliant Blue staining.

## GENE INFORMATION

**Official Symbol** [TCEA3](#)

**Synonyms** TCEA3; transcription elongation factor A (SII), 3; transcription elongation factor A protein 3; TFII.S.H; rhabdomyosarcoma antigen MU-RMS-40.22; transcription elongation factor TFII.S.h; transcription elongation factor S-II protein 3; TFII.S;

**Gene ID** [6920](#)

**mRNA Refseq** [NM\\_003196](#)

**Protein Refseq** [NP\\_003187](#)

**MIM** [604128](#)

**UniProt ID** [O75764](#)

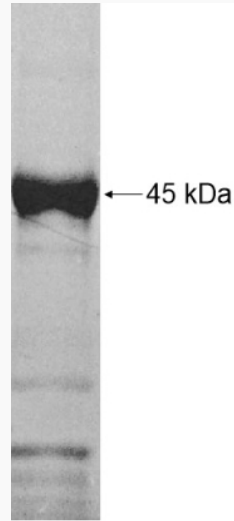
 Tel: 1-631-559-9269 1-516-512-3133

 Email: [info@creative-biomart.com](mailto:info@creative-biomart.com)  Fax: 1-631-938-8127

 45-1 Ramsey Road, Shirley, NY 11967, USA



SDS-PAGE



Tel: 1-631-559-9269 1-516-512-3133

Email: [info@creative-biomart.com](mailto:info@creative-biomart.com) Fax: 1-631-938-8127

45-1 Ramsey Road, Shirley, NY 11967, USA