

# Recombinant Human TCEAL3 Protein, MYC/DDK-tagged, C13 and N15-labeled

Cat. No. TCEAL3-172H Lot. No. (See product label)

## SPECIFICATION

<b>Product Overview</b>	TCEAL3 MS Standard C13 and N15-labeled recombinant protein (NP_116315) with a C-terminal MYC/DDK tag, was expressed in HEK293 cells.
<b>Species</b>	Human
<b>Source</b>	HEK293
<b>Description</b>	This gene encodes a member of the transcription elongation factor A (SII)-like (TCEAL) gene family. Members of this family contain TFA domains and may function as nuclear phosphoproteins that modulate transcription in a promoter context-dependent manner. Multiple family members are located on the X chromosome. Alternative splicing results in multiple transcript variants encoding a single isoform. [provided by RefSeq, Jul 2008]
<b>Molecular Mass</b>	22.5 kDa
<b>AA Sequence</b>	MEKPYNKNEGNLENEGKPEDEVDPDEGKSDEEEKPDVEGKTECEGKREDEGEP GDEGQLEDEGSQEKQGRSEGEKPKQGEGKPPASQAKPESQPRAAEKRPADYVPR KAKRKTDRTGDDSPKDSQEDLQERHLSSEEMMRECGDVSRAQEELRKKQKMGGF HWMQRDVQDPFAPRGQRGVRGVRGGGRGQRGLHDIPYLTRTRPLEQKLISEEDLA ANDILDYKDDDDKV
<b>Purity</b>	> 80% as determined by SDS-PAGE and Coomassie blue staining

 Tel: 1-631-559-9269 1-516-512-3133

 Email: [info@creative-biomart.com](mailto:info@creative-biomart.com)  Fax: 1-631-938-8127

 45-1 Ramsey Road, Shirley, NY 11967, USA

<b>Stability</b>	Stable for 3 months from receipt of products under proper storage and handling conditions.
<b>Storage</b>	Store at -80 centigrade. Avoid repeated freeze-thaw cycles.
<b>Concentration</b>	50 µg/mL as determined by BCA
<b>Storage Buffer</b>	100 mM glycine, 25 mM Tris-HCl, pH 7.3.

## GENE INFORMATION

<b>Gene Name</b>	TCEAL3 transcription elongation factor A like 3 [ Homo sapiens (human) ]
<b>Official Symbol</b>	TCEAL3
<b>Synonyms</b>	TCEAL3; transcription elongation factor A like 3; WEX8
<b>Gene ID</b>	85012
<b>mRNA Refseq</b>	NM_032926
<b>Protein Refseq</b>	NP_116315
<b>UniProt ID</b>	Q969E4

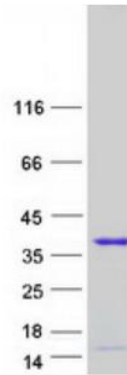
 Tel: 1-631-559-9269 1-516-512-3133

 Email: [info@creative-biomart.com](mailto:info@creative-biomart.com)  Fax: 1-631-938-8127

 45-1 Ramsey Road, Shirley, NY 11967, USA



SDS-PAGE



Tel: 1-631-559-9269 1-516-512-3133

Email: [info@creative-biomart.com](mailto:info@creative-biomart.com) Fax: 1-631-938-8127

45-1 Ramsey Road, Shirley, NY 11967, USA