

# Recombinant Human TCEANC2 Protein, Myc/DDK-tagged, C13 and N15-labeled

**Cat. No.** TCEANC2-3085H    **Lot. No.** (See product label)

## SPECIFICATION

|                         |   |
|-------------------------|---|
| <b>Product Overview</b> | C1orf83 MS Standard C13 and N15-labeled recombinant protein (NP_694580) with a C-terminal MYC/DDK tag, was expressed in HEK293 cells.   |
| <b>Species</b>          | Human   |
| <b>Source</b>           | HEK293  |
| <b>Description</b>      | Belongs to the TCEANC2 family.  |
| <b>Molecular Mass</b>   | 24.2 kDa  |
| <b>AA Sequence</b>      | MDKFVIRTPRIQNSPQKKDSGGKVYKQATIESLKRVVVVEDIKRWKTMLELPDQTKENLVEALQELKKKIPSREVLKSTRIGHTVNKMRKHSDSEVASLAREVYTEWKTFTTEKHSNRPSIEVRSDPKTESLRKNAQKLLSEALELKMDHLLVENIERETFHLCSRLINGPYRRTVRLVFTLKHRAEIRAQVKSGSLPVGTFVQTHKKTRTRPLEQKLISEEDLAANDILDYKDDDDKV |
| <b>Purity</b>           | > 80% as determined by SDS-PAGE and Coomassie blue staining   |
| <b>Stability</b>        | Stable for 3 months from receipt of products under proper storage and handling conditions.  |
| <b>Storage</b>          | Store at -80 centigrade. Avoid repeated freeze-thaw cycles.   |

 Tel: 1-631-559-9269    1-516-512-3133

 Email: [info@creative-biomart.com](mailto:info@creative-biomart.com)     Fax: 1-631-938-8127

 45-1 Ramsey Road, Shirley, NY 11967, USA

**Concentration** 50 µg/mL as determined by BCA

**Storage Buffer** 100 mM glycine, 25 mM Tris-HCl, pH 7.3.

## GENE INFORMATION

**Gene Name** TCEANC2 transcription elongation factor A N-terminal and central domain containing 2 [ Homo sapiens (human) ]

**Official Symbol** TCEANC2

**Synonyms** TCEANC2; transcription elongation factor A (SII) N-terminal and central domain containing 2; C1orf83, chromosome 1 open reading frame 83; transcription elongation factor A N-terminal and central domain-containing protein 2; FLJ32112; C1orf83; RP4-758J24.3; FLJ39169;

**Gene ID** 127428

**mRNA Refseq** NM\_153035

**Protein Refseq** NP\_694580

**UniProt ID** Q96MN5

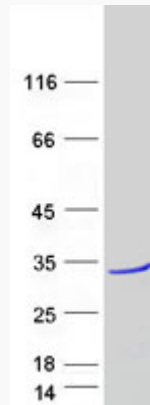
 Tel: 1-631-559-9269 1-516-512-3133

 Email: [info@creative-biomart.com](mailto:info@creative-biomart.com)  Fax: 1-631-938-8127

 45-1 Ramsey Road, Shirley, NY 11967, USA



SDS-PAGE



Tel: 1-631-559-9269 1-516-512-3133

Email: [info@creative-biomart.com](mailto:info@creative-biomart.com) Fax: 1-631-938-8127

45-1 Ramsey Road, Shirley, NY 11967, USA