

Recombinant Human TCF21 Protein, Myc/DDK-tagged, C13 and N15-labeled

Cat. No. TCF21-1058H **Lot. No.** (See product label)

SPECIFICATION

Product Overview	TCF21 MS Standard C13 and N15-labeled recombinant protein (NP_938206) with a C-terminal MYC/DDK tag, was expressed in HEK293 cells.
Species	Human
Source	HEK293
Description	TCF21 encodes a transcription factor of the basic helix-loop-helix family. The TCF21 product is mesoderm specific, and expressed in embryonic epicardium, mesenchyme-derived tissues of lung, gut, gonad, and both mesenchymal and glomerular epithelial cells in the kidney. Two transcript variants encoding the same protein have been found for this gene.
Molecular Mass	19.5 kDa
AA Sequence	MSTGSLSDVEDLQEVEMLECDGLKMDSNKEFVTSNESTEESSNCENGSPQKGRGG LGKRRKAPTKKSPLSGVSQEGKQVQRNAANARERARMRVLKAFSRLKTTLPWVP PDTKLSKLDLRLASSYIAHLRQILANDKYENGYIHPVNLTPFMVAGKPESDLKEVV TASRLCGTTASTRTRPLEQKLISEEDLAANDILDYKDDDDKV
Purity	> 80% as determined by SDS-PAGE and Coomassie blue staining
Stability	Stable for 3 months from receipt of products under proper storage and handling conditions.

 Tel: 1-631-559-9269 1-516-512-3133

 Email: info@creative-biomart.com  Fax: 1-631-938-8127

 45-1 Ramsey Road, Shirley, NY 11967, USA

Storage	Store at -80 centigrade. Avoid repeated freeze-thaw cycles.
Concentration	50 µg/mL as determined by BCA
Storage Buffer	100 mM glycine, 25 mM Tris-HCl, pH 7.3.
GENE INFORMATION	
Gene Name	TCF21 transcription factor 21 [Homo sapiens (human)]
Official Symbol	TCF21
Synonyms	TCF21; transcription factor 21; POD1; bHLHa23; transcription factor 21; capsulin; class A basic helix-loop-helix protein 23; epicardin; pod-1; podocyte-expressed 1
Gene ID	6943
mRNA Refseq	NM_198392
Protein Refseq	NP_938206
MIM	603306
UniProt ID	O43680

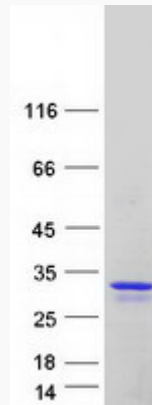
 Tel: 1-631-559-9269 1-516-512-3133

 Email: info@creative-biomart.com  Fax: 1-631-938-8127

 45-1 Ramsey Road, Shirley, NY 11967, USA



SDS-PAGE



☎ Tel: 1-631-559-9269 1-516-512-3133

☎ Email: info@creative-biomart.com ☎ Fax: 1-631-938-8127

☎ 45-1 Ramsey Road, Shirley, NY 11967, USA