

# Recombinant Human TCHP Protein (1-498 aa), His-SUMO-tagged

**Cat. No.** TCHP-1134H    **Lot. No.** (See product label)

## SPECIFICATION

<b>Product Overview</b>	Recombinant Human TCHP Protein (1-498 aa) is produced by E. coli expression system. This protein is fused with a 6xHis-SUMO tag at the N-terminal. Research Area: Cancer. Protein Description: Full Length.
<b>Species</b>	Human
<b>Source</b>	E.coli
<b>ProteinLength</b>	1-498 aa
<b>Description</b>	Tumor suppressor which has the ability to inhibit cell growth and be pro-apoptotic during cell stress. Inhibits cell growth in bladder and prostate cancer cells by a down-regulation of HSPB1 by inhibiting its phosphorylation. May act as a 'capping' or 'branching' protein for keratin filaments in the cell periphery. May regulate K8/K18 filament and desmosome organization mainly at the apical or peripheral regions of simple epithelial cells.
<b>Form</b>	Tris-based buffer, 50% glycerol
<b>Molecular Mass</b>	77.1 kDa
<b>AA Sequence</b>	MALPTLPSYWCSQQRLNQQRLARQREQEARLRQQWEQNSRYFRMSDICSSKQAEW SSKTSYQRSMHAYQREKMKEEKRRSLEARREKLRQLMQEEQDLLARELEELRLSM NLQERRIREQHGKLSAKEEQRKLIAEQLLYEHWKNNPKLREMELDLHQKHVVNS

 Tel: 1-631-559-9269    1-516-512-3133

 Email: [info@creative-biomart.com](mailto:info@creative-biomart.com)     Fax: 1-631-938-8127

 45-1 Ramsey Road, Shirley, NY 11967, USA

WEMQKEEKKQQEATAEQENKRYENEYERARREALERMKAEEERRQLEDKLAQAEAL  
 LQQMEELKLKEVEATKLLKKEQENLLKQRWELERLEEERKQMEAFRQKAELGRFLRH  
 QYNAQLSRRTQQIQEELEADRRILQALLEKEDESQRLHLARREQVMADVAWMKQAI  
 EEQLQLERAREAELQMLLREEAKEMWEKREAEWARERSARDRLMSEVLTGRQQQI  
 QEKIEQNRRAQEESLKHREQLIRNLEEVRRELARREKEESEKLSARKQELEAQAER  
 RLQAWAADQQEEEEEEEEARRVEQLSDALLQQEAETMAEQGYRPKPYGHPKIAWN

<b>Purity</b>	> 90% as determined by SDS-PAGE.
<b>Notes</b>	Repeated freezing and thawing is not recommended. Store working aliquots at 4 centigrade for up to one week.
<b>Storage</b>	The shelf life is related to many factors, storage state, buffer ingredients, storage temperature and the stability of the protein itself. Generally, the shelf life of liquid form is 6 months at -20 centigrade/-80 centigrade. The shelf life of lyophilized form is 12 months at -20 centigrade/-80 centigrade.
<b>Concentration</b>	A hardcopy of COA with concentration instruction is sent along with the products.

## GENE INFORMATION

<b>Gene Name</b>	TCHP trichoplein, keratin filament binding [ Homo sapiens ]
<b>Official Symbol</b>	TCHP
<b>Synonyms</b>	TCHP; MGC10854; mitostatin; TpMs;
<b>Gene ID</b>	84260
<b>mRNA Refseq</b>	NM_001143852

 Tel: 1-631-559-9269 1-516-512-3133

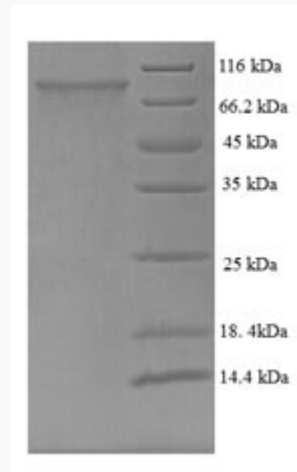
 Email: [info@creative-biomart.com](mailto:info@creative-biomart.com)  Fax: 1-631-938-8127

 45-1 Ramsey Road, Shirley, NY 11967, USA

**Protein Refseq** NP\_001137324

**MIM** 612654

**UniProt ID** Q9BT92



(Tris-Glycine gel) Discontinuous SDS-PAGE (reduced) with 5% enrichment gel and 15% separation gel.

 Tel: 1-631-559-9269 1-516-512-3133

 Email: [info@creative-biomart.com](mailto:info@creative-biomart.com)  Fax: 1-631-938-8127

 45-1 Ramsey Road, Shirley, NY 11967, USA