

Active Recombinant Human TCN2 Protein, His-tagged

Cat. No. TCN2-570H Lot. No. (See product label)

SPECIFICATION

Product Overview	Active Recombinant Human TCN2 Protein(NP_000346.2) (Met 1-Trp 427) with a C-terminal polyhistidine tag was expressed in HEK293.
Species	Human
Source	HEK293
ProteinLength	1-427 aa
Form	Lyophilized from sterile PBS, pH 7.4.
Bio-activity	Measured by its binding ability in a functional ELISA. Immobilized human TCN2-His at 10µg/mL (100µL/well) can bind biotinylated mouse CD320-His. The EC50 of biotinylated mouse CD320-His is 18-42 ng/mL.
Molecular Mass	The secreted recombinant human TCN2 comprises 418 amino acids with a predicted molecular mass of 46.7 kDa. It migrates with the molecular weight of approximately 43 kDa in SDS-PAGE under reducing conditions.
Endotoxin	< 1.0 EU per µg protein as determined by the LAL method.
Purity	> 90 % as determined by SDS-PAGE
Storage	Store it under sterile conditions at -20°C to -80°C upon receiving. Recommend to aliquot the protein into smaller quantities for optimal storage. Avoid repeated freeze-

 Tel: 1-631-559-9269 1-516-512-3133

 Email: info@creative-biomart.com  Fax: 1-631-938-8127

 45-1 Ramsey Road, Shirley, NY 11967, USA

thaw cycles.

Reconstitution

It is recommended that sterile water be added to the vial to prepare a stock solution of 0.2 ug/ul. Centrifuge the vial at 4°C before opening to recover the entire contents.

GENE INFORMATION

Gene Name TCN2 transcobalamin II [Homo sapiens]

Official Symbol TCN2

Synonyms TCN2; transcobalamin II; transcobalamin II; macrocytic anemia; transcobalamin-2; D22S676; D22S750; macrocytic anemia; TC2; vitamin B12-binding protein 2; II; TC; TC-2; TCII; TC II;

Gene ID 6948

mRNA Refseq NM_000355

Protein Refseq NP_000346

MIM 613441

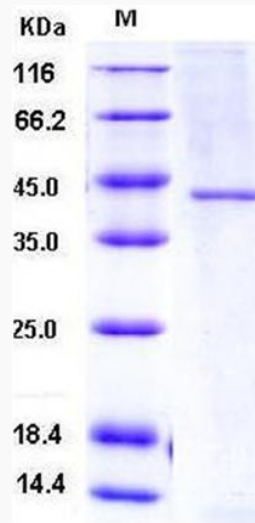
UniProt ID P20062

 Tel: 1-631-559-9269 1-516-512-3133

 Email: info@creative-biomart.com  Fax: 1-631-938-8127

 45-1 Ramsey Road, Shirley, NY 11967, USA

SDS-PAGE



 Tel: 1-631-559-9269 1-516-512-3133

 Email: info@creative-biomart.com  Fax: 1-631-938-8127

 45-1 Ramsey Road, Shirley, NY 11967, USA