

# Recombinant Full Length Human TCP1 Protein, C-Flag-tagged

Cat. No. TCP1-1996HFL Lot. No. (See product label)

## SPECIFICATION

<b>Product Overview</b>	Recombinant Full Length Human TCP1 Protein, fused to Flag-tag at C-terminus, was expressed in Mammalian cells.
<b>Species</b>	Human
<b>Source</b>	Mammalian Cells
<b>Description</b>	The protein encoded by this gene is a molecular chaperone that is a member of the chaperonin containing TCP1 complex (CCT), also known as the TCP1 ring complex (TRiC). This complex consists of two identical stacked rings, each containing eight different proteins. Unfolded polypeptides enter the central cavity of the complex and are folded in an ATP-dependent manner. The complex folds various proteins, including actin and tubulin. Alternate transcriptional splice variants of this gene, encoding different isoforms, have been characterized. In addition, three pseudogenes that appear to be derived from this gene have been found.
<b>Form</b>	25 mM Tris HCl, pH 7.3, 100 mM glycine, 10% glycerol.
<b>Molecular Mass</b>	60.2 kDa
<b>AA Sequence</b>	MEGPLSVFGDRSTGETIRSQNVMAAASIANIVKSSLGPVGLDKMLVDDIGDVTITNDG ATILKLLEVEHP AAKVLCELADLQDKEVGDGTTSVVIAAELLKNADELVKQKIHPTSVI SGYRLACKEAVRYINENLIVNT DELGRDCLINAAKTSMSKIIINGDFFANMVVDAV LAIKYTDIRGQPRYPVNSVNILKAHGRSQMESML ISGYALNCVVGSQGMPKRIVNAK IACLD FSLQKTKMKLGVQVVITDPEKLDQIRQRES DITKERIQKILA TGANVILTTGGID

Tel: 1-631-559-9269 1-516-512-3133

Email: [info@creative-biomart.com](mailto:info@creative-biomart.com) Fax: 1-631-938-8127

45-1 Ramsey Road, Shirley, NY 11967, USA

DMCLKYFVEAGAMAVRRVLKRD LKRIAKASGATILSTLANLEGEETFEAAMLGQAE E  
 VVQERICDDELILIKNTKARTSASIILRGANDFMCDemersLHDALCVVKRVLESKSVV  
 PGGGAVEAALS IYLENYATSMGSREQLAIAEFARSLLVIPNTLAVNAAQDSTDLVAKL  
 RAFHNEAQVNPERKNLKWIGLDL SNGKPRDNKQAGVF EPTIVKVKSLKFATEAAITIL  
 RIDDLIKLHPESKDDKHGSYEDAVHSGALND TRTRPLEQKLISEEDLAANDILDYKDD  
 DDKV

<b>Purity</b>	> 80% as determined by SDS-PAGE and Coomassie blue staining.
<b>Stability</b>	Stable for 12 months from the date of receipt of the product under proper storage and handling conditions. Avoid repeated freeze-thaw cycles.
<b>Storage</b>	Store at -80 centigrade.
<b>Concentration</b>	>50 ug/mL as determined by microplate BCA method.
<b>Preparation</b>	Recombinant protein was captured through anti-DDK affinity column followed by conventional chromatography steps.
<b>Full Length</b>	Full L.

## GENE INFORMATION

<b>Gene Name</b>	TCP1 t-complex 1 [ Homo sapiens (human) ]
<b>Official Symbol</b>	TCP1
<b>Synonyms</b>	CCT-alpha, CCT1, CCTa, D6S230E, TCP-1-alpha
<b>Gene ID</b>	6950

 Tel: 1-631-559-9269 1-516-512-3133

 Email: [info@creative-biomart.com](mailto:info@creative-biomart.com)  Fax: 1-631-938-8127

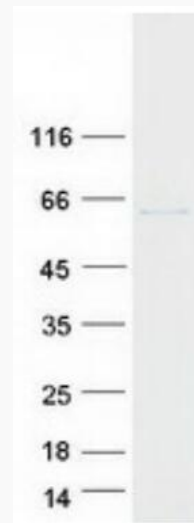
 45-1 Ramsey Road, Shirley, NY 11967, USA

mRNA Refseq [NM\\_030752.3](#)

Protein Refseq [NP\\_110379.2](#)

MIM [186980](#)

UniProt ID [P17987](#)



Coomassie blue staining of purified TCP1 protein.

 Tel: 1-631-559-9269 1-516-512-3133

 Email: [info@creative-biomart.com](mailto:info@creative-biomart.com)  Fax: 1-631-938-8127

 45-1 Ramsey Road, Shirley, NY 11967, USA