

Recombinant Human TCP1 Protein, Myc/DDK-tagged, C13 and N15-labeled

Cat. No. TCP1-3714H **Lot. No.** (See product label)

SPECIFICATION

Product Overview	TCP1 MS Standard C13 and N15-labeled recombinant protein (NP_110379) with a C-terminal MYC/DDK tag, was expressed in HEK293 cells.
Species	Human
Source	HEK293
Description	The protein encoded by this gene is a molecular chaperone that is a member of the chaperonin containing TCP1 complex (CCT), also known as the TCP1 ring complex (TRiC). This complex consists of two identical stacked rings, each containing eight different proteins. Unfolded polypeptides enter the central cavity of the complex and are folded in an ATP-dependent manner. The complex folds various proteins, including actin and tubulin. Alternate transcriptional splice variants of this gene, encoding different isoforms, have been characterized. In addition, three pseudogenes that appear to be derived from this gene have been found.
Molecular Mass	60.3 kDa
AA Sequence	MEGPLSVFGDRSTGETIRSQNVMAAASIANIVKSSLGPVGLDKMLVDDIGDVTITNDG ATILKLLLEVEHPAAKVLCELADLQDKEVGDGTTSSVVIIAEELLKNADELVKQKIHTSVI SGYRLACKEAVRYINENLIVNTDELGRDCLINAAKTSMSSKIIGINGDFFANMVVDAVL AIKYTDIRGQPRYPVNSVNILKAHGRSQMESMLISGYALNCVVGSQGMPKRIVNAKIA CLDFSLQKTKMKLGVQVVITDPEKLDQIRQRESKITKERIQKILATGANVILTTGGIDD

 Tel: 1-631-559-9269 1-516-512-3133

 Email: info@creative-biomart.com  Fax: 1-631-938-8127

 45-1 Ramsey Road, Shirley, NY 11967, USA

MCLKYFVEAGAMAVRRVLKRD LKRIAKASGATILSTLANLEGEETFEAAMLGQAEV
 VQERICDDELILIKNTKARTSASIILRGANDFCDEMERSLHDALCVVKRVLESKSVVP
 GGGAVEAALSIIYLENYATSMGSREQLAIAEFARSLVIPNTLAVNAAQDSTDLVAKLR
 AFHNEAQVNPERKNLKWIGLDLSNGKPRDNKQAGVFEPTIVKVKSLKFATEAAITILRI
 DDLIKLHPESKDDKHGSYEDAVHSGALNDTRTRPLEQKLISEEDLAANDILDYKDDD
 DKV

Purity > 80% as determined by SDS-PAGE and Coomassie blue staining

Stability Stable for 3 months from receipt of products under proper storage and handling conditions.

Storage Store at -80 centigrade. Avoid repeated freeze-thaw cycles.

Concentration 50 µg/mL as determined by BCA

Storage Buffer 100 mM glycine, 25 mM Tris-HCl, pH 7.3.

GENE INFORMATION

Gene Name TCP1 t-complex 1 [Homo sapiens (human)]

Official Symbol TCP1

Synonyms TCP1; t-complex 1; T-complex protein 1 subunit alpha; CCT1; Ccta; D6S230E; tailless complex polypeptide 1; T-complex protein 1, alpha subunit; CCTa; CCT-alpha; TCP-1-alpha;

Gene ID 6950

mRNA Refseq NM_030752

 Tel: 1-631-559-9269 1-516-512-3133

 Email: info@creative-biomart.com  Fax: 1-631-938-8127

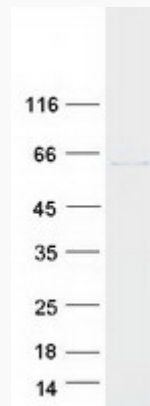
 45-1 Ramsey Road, Shirley, NY 11967, USA

Protein Refseq NP_110379

MIM 186980

UniProt ID P17987

SDS-PAGE



 Tel: 1-631-559-9269 1-516-512-3133

 Email: info@creative-biomart.com  Fax: 1-631-938-8127

 45-1 Ramsey Road, Shirley, NY 11967, USA