

Recombinant Human TCP1 Protein (Met1-Asp556), C-His tagged

Cat. No. TCP1-6406H **Lot. No.** (See product label)

SPECIFICATION

Product Overview	Recombinant human TCP1 (Met1-Asp556) fused with the C-terminal His tag was expressed in E. coli.
Species	Human
Source	E.coli
ProteinLength	Met1-Asp556
Form	Lyophilized powder/frozen liquid
Molecular Mass	61.59 kDa
Purity	> 90 % as determined by SDS-PAGE
Notes	For research use only.
Storage	Use a manual defrost freezer and avoid repeated freeze thaw cycles. Store at 2 to 8 centigrade for one week. Store at -20 to -80 centigrade for twelve months from the date of receipt.
Storage Buffer	Supplied as solution form in PBS, pH 7.4, 0.02 % NLS.
Reconstitution	Reconstitute in sterile water for a stock solution.

 Tel: 1-631-559-9269 1-516-512-3133

 Email: info@creative-biomart.com  Fax: 1-631-938-8127

 45-1 Ramsey Road, Shirley, NY 11967, USA

Shipping They are shipped out with dry ice/blue ice unless customers require otherwise.

GENE INFORMATION

Gene Name TCP1 t-complex 1 [Homo sapiens (human)]

Official Symbol TCP1

Synonyms TCP1; t-complex 1; T-complex protein 1 subunit alpha; CCT1; Ccta; D6S230E; tailless complex polypeptide 1; T-complex protein 1, alpha subunit; CCTa; CCT-alpha; TCP-1-alpha;

Gene ID 6950

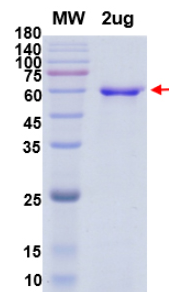
mRNA Refseq NM_001008897

Protein Refseq NP_001008897

MIM 186980

UniProt ID P17987

SDS-PAGE



 Tel: 1-631-559-9269 1-516-512-3133

 Email: info@creative-biomart.com  Fax: 1-631-938-8127

 45-1 Ramsey Road, Shirley, NY 11967, USA