

Recombinant Human TCP11L1 Protein, Myc/DDK-tagged, C13 and N15-labeled

Cat. No. TCP11L1-4777H Lot. No. (See product label)

SPECIFICATION

Product Overview

TCP11L1 MS Standard C13 and N15-labeled recombinant protein (NP_060863) with a C-terminal MYC/DDK tag, was expressed in HEK293 cells.

Species

Human

Source

HEK293

Description

TCP11L1 (T-Complex 11 Like 1) is a Protein Coding gene. An important paralog of this gene is TCP11L2.

Molecular Mass

57.1 kDa

AA Sequence

MSENLDKSNVNEAGKSKSNDSEEGLEDAVEGADEALQKAIKSDSSSPQRVQRPHS
 SPPRFVTVEELLETARGVTNMALAHEIVVNGDFQIKPVELPENSLKKRVKEIVHKAFW
 DCLSVQLSEDPAYDHAIKLVGEIKETLLSFLLPGHTRLRNQITEVLDLQKQEAENG
 ALDISRLAEFIIGMMGTLCAPARDEEVKLLDKIKEIVPLFREIFSVLDLMKVDMANFAIS
 SIRPHLMQQSVEYERKKFQEILERQPNSLDFVTQWLEEASEDLMTQKYKHALPVGG
 MAAGSGDMPRLSPVAVQNYAYLKLLKWDHLQRPFPETVLMQSRFHELQLQLEQL
 TILGAVLLVTFMSMAAPGISSQADFAEKLMIVKILLTDMHLPSFHLKDVLTITIGEKVCLE
 VSSCLSLCGSSPFTTDKETVLKGQIQAVASPDPIRRIMESRILTFLETYLASGHQKPL
 PTVPGGLSPVQRELEEVAIKFARLVNYNKMFPCPYDAILSKILVRSTRTRPLEQKLIS
 EEDLAANDILDYKDDDDKV

Purity

> 80% as determined by SDS-PAGE and Coomassie blue staining

Tel: 1-631-559-9269 1-516-512-3133

Email: info@creative-biomart.com Fax: 1-631-938-8127

45-1 Ramsey Road, Shirley, NY 11967, USA



Stability	Stable for 3 months from receipt of products under proper storage and handling conditions.
Storage	Store at -80 centigrade. Avoid repeated freeze-thaw cycles.
Concentration	50 µg/mL as determined by BCA
Storage Buffer	100 mM glycine, 25 mM Tris-HCl, pH 7.3.

GENE INFORMATION

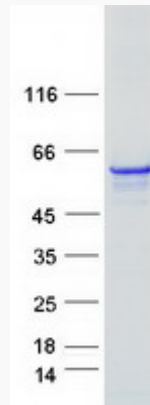
Gene Name	TCP11L1 t-complex 11 like 1 [Homo sapiens (human)]
Official Symbol	TCP11L1
Synonyms	TCP11L1; t-complex 11 like 1; dJ85M6.3; T-complex protein 11-like protein 1; t-complex 11, testis-specific-like 1
Gene ID	55346
mRNA Refseq	NM_018393
Protein Refseq	NP_060863
UniProt ID	Q9NUJ3

Tel: 1-631-559-9269 1-516-512-3133

Email: info@creative-biomart.com Fax: 1-631-938-8127

45-1 Ramsey Road, Shirley, NY 11967, USA

SDS-PAGE



 Tel: 1-631-559-9269 1-516-512-3133

 Email: info@creative-biomart.com  Fax: 1-631-938-8127

 45-1 Ramsey Road, Shirley, NY 11967, USA