

# Recombinant Human TCP11L1 Protein, Myc/DDK-tagged, C13 and N15-labeled

Cat. No. TCP11L1-6259H Lot. No. (See product label)

## SPECIFICATION

<b>Product Overview</b>	TCP11L1 MS Standard C13 and N15-labeled recombinant protein (NP_001139013) with a C-terminal MYC/DDK tag, was expressed in HEK293 cells.
<b>Species</b>	Human
<b>Source</b>	HEK293
<b>Description</b>	TCP11L1 (T-Complex 11 Like 1) is a Protein Coding gene. An important paralog of this gene is TCP11L2.
<b>Molecular Mass</b>	57.1 kDa
<b>AA Sequence</b>	<p>MSENLDKSNVNEAGKSKSNDSEEGLEDAVEGADEALQKAIKSDSSSPQRVQRPHS  SPPRFVTVEELLETARGVTNMALAHEIVVNGDFQIKPVELPENSLKKRVKEIVHKAFW  DCLSVQLSEDPAYDHAIKLVGEIKETLLSFLPGHTRLRNQITEVLDLQKQEAENG  ALDISRLAEFIIGMMGTLCAPARDEEVKLLDKIKEIVPLFREIFSVLDLMKVDMANFAIS  SIRPHLMQQSVEYERKKFQEILERQPNSLDFVTQWLEEASEDLMTQKYKHALPVGG  MAAGSGDMPRLSPVAVQNYAYLKKLWDHLQRPFPEVLMQSRFHELQLQLEQL  TILGAVLLVTFMSMAAPGISSQADFAEKLMIVKILLTDMHLPSFHLKDVLTITIGEKVCLE  VSSCLSLCGSSPFTTDKETVLKGQIQAVASPDPIRRIMESRILTFLITYLASGHQKPL  PTVPGGLSPVQRELEEVAIKFARLVNYNKMVFCPPYDAILSKILVRSTRTRPLEQKLIS  EEDLAANDILDYKDDDDKV</p>
<b>Purity</b>	> 80% as determined by SDS-PAGE and Coomassie blue staining

 Tel: 1-631-559-9269 1-516-512-3133

 Email: [info@creative-biomart.com](mailto:info@creative-biomart.com)  Fax: 1-631-938-8127

 45-1 Ramsey Road, Shirley, NY 11967, USA

<b>Stability</b>	Stable for 3 months from receipt of products under proper storage and handling conditions.
<b>Storage</b>	Store at -80 centigrade. Avoid repeated freeze-thaw cycles.
<b>Concentration</b>	50 µg/mL as determined by BCA
<b>Storage Buffer</b>	100 mM glycine, 25 mM Tris-HCl, pH 7.3.

## GENE INFORMATION

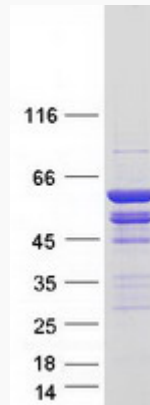
<b>Gene Name</b>	TCP11L1 t-complex 11 like 1 [ Homo sapiens (human) ]
<b>Official Symbol</b>	TCP11L1
<b>Synonyms</b>	TCP11L1; t-complex 11 like 1; dJ85M6.3; T-complex protein 11-like protein 1; t-complex 11, testis-specific-like 1
<b>Gene ID</b>	55346
<b>mRNA Refseq</b>	NM_001145541
<b>Protein Refseq</b>	NP_001139013
<b>UniProt ID</b>	Q9NUJ3

 Tel: 1-631-559-9269 1-516-512-3133

 Email: [info@creative-biomart.com](mailto:info@creative-biomart.com)  Fax: 1-631-938-8127

 45-1 Ramsey Road, Shirley, NY 11967, USA

**SDS-PAGE**



 Tel: 1-631-559-9269 1-516-512-3133

 Email: [info@creative-biomart.com](mailto:info@creative-biomart.com)  Fax: 1-631-938-8127

 45-1 Ramsey Road, Shirley, NY 11967, USA