

Recombinant Human TCP11L2 Protein, Myc/DDK-tagged, C13 and N15-labeled

Cat. No. TCP11L2-4394H Lot. No. (See product label)

SPECIFICATION

Product Overview

TCP11L2 MS Standard C13 and N15-labeled recombinant protein (NP_689985) with a C-terminal MYC/DDK tag, was expressed in HEK293 cells.

Species

Human

Source

HEK293

Description

Belongs to the TCP11 family.

Molecular Mass

58.1 kDa

AA Sequence

MPFNGEKQCVGEDQPSSDSSRFSESMASLSDYECRQSFASDSSSKSSSPASTS
 PPRVVTFFDEVMATARNLSNLTLAHEIAVNENFQLKQEALPEKSLAGRVKHIVHQAFW
 DVLDSELNADPPEFEHAIKLFEEIREILLSFLTTPGGNRLRNQICEVLDLTDLIRQQAEHS
 AVDIQGLANYVISTMGKLCAPVRDNDIRELKATGNIVEVLRQIFHVLDLMQMDMANFT
 IMSLRPHLQRQLVEYERTKFQEILEETPSALDQTTEWIKESVNEELFSLSESALTPGA
 ENTSKPSLSPTLVLNNSYLKLLQWDYQKKELPETLMTDGARLQELTEKLNQLKIIACL
 SLITNNMVGAITGGLPELASRLTRISAVLLEGMNKETFNLKEVLNSIGIQTCVEVNKTL
 MERGLPTLNAEIQANLIGQFSSIEEEDNPIWSLIDKRIKLYMRRLLCLPSPQKCMPPM
 PGGLAVIQQEALGSQYANIVNLNKQVYGPFYANILRKLLFNEEAMGKVDASPTTN
 TRTRPLEQKLISEEDLAANDILDYKDDDDKV

Purity

> 80% as determined by SDS-PAGE and Coomassie blue staining

 Tel: 1-631-559-9269 1-516-512-3133

 Email: info@creative-biomart.com  Fax: 1-631-938-8127

 45-1 Ramsey Road, Shirley, NY 11967, USA

Stability	Stable for 3 months from receipt of products under proper storage and handling conditions.
Storage	Store at -80 centigrade. Avoid repeated freeze-thaw cycles.
Concentration	50 µg/mL as determined by BCA
Storage Buffer	100 mM glycine, 25 mM Tris-HCl, pH 7.3.

GENE INFORMATION

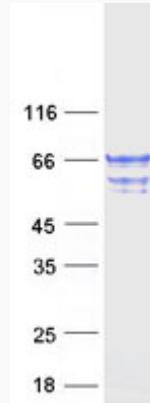
Gene Name	TCP11L2 t-complex 11 like 2 [Homo sapiens (human)]
Official Symbol	TCP11L2
Synonyms	TCP11L2; t-complex 11 (mouse)-like 2; t complex 11 (mouse) like 2; T-complex protein 11-like protein 2; MGC40368;
Gene ID	255394
mRNA Refseq	NM_152772
Protein Refseq	NP_689985
UniProt ID	Q8N4U5

 Tel: 1-631-559-9269 1-516-512-3133

 Email: info@creative-biomart.com  Fax: 1-631-938-8127

 45-1 Ramsey Road, Shirley, NY 11967, USA

SDS-PAGE



 Tel: 1-631-559-9269 1-516-512-3133

 Email: info@creative-biomart.com  Fax: 1-631-938-8127

 45-1 Ramsey Road, Shirley, NY 11967, USA