

Recombinant Human TDGF1 Protein, MBP-tagged

Cat. No. TDGF1-001H Lot. No. (See product label)

SPECIFICATION

Product Overview	Recombinant Human TDGF1 Protein (1-188 aa (full-length)) with MBP tag was expressed in E. coli.
Species	Human
Source	E.coli
ProteinLength	1-188
Description	This gene encodes an epidermal growth factor-related protein that contains a cripto, FRL-1, and cryptic domain. The encoded protein is an extracellular, membrane-bound signaling protein that plays an essential role in embryonic development and tumor growth. Mutations in this gene are associated with forebrain defects. Pseudogenes of this gene are found on chromosomes 2, 3, 6, 8, 19 and X. Alternate splicing results in multiple transcript variants.
Molecular Mass	65.8 kDa
Purity	>95% confirmed by 10% SDS-PAGE stained with Coomassie Blue (CB).
Applications	ELISA, Western Blot, Antibody Production, Protein array
Quality Control Test	10% SDS-PAGE stained with Coomassie Blue (CB), immunoblotting with anti-MBP (WB) and peptide fingerprinting by MALDI-TOF mass spectrometry.

 Tel: 1-631-559-9269 1-516-512-3133

 Email: info@creative-biomart.com  Fax: 1-631-938-8127

 45-1 Ramsey Road, Shirley, NY 11967, USA

Storage	Prior to reconstitution, store the lyophilized protein at 2–8 centigrade. After reconstitution, store in working aliquots at –80 centigrade.
Expiry	All components are stable for 1 year of receipt, if stored properly.
Storage Buffer	Lyophilized from a solution of phosphate buffered saline (PBS), pH 7.4, containing 0.50 mg TDGF1 per ml. No preservatives added.
Shipping	Lyophilized at Ambient temperature

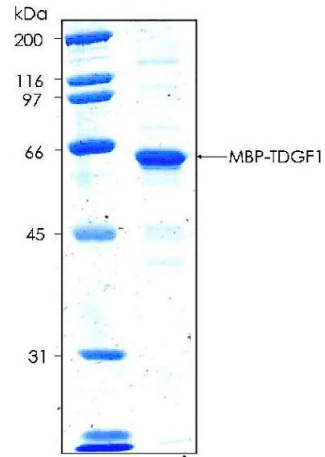
GENE INFORMATION

Gene Name	TDGF1 teratocarcinoma-derived growth factor 1 [Homo sapiens (human)]
Official Symbol	TDGF1
Synonyms	TDGF1; teratocarcinoma-derived growth factor 1; CR; CR-1; CRGF; CRIPTO; teratocarcinoma-derived growth factor 1; cripto-1 growth factor; epidermal growth factor-like cripto protein CR1
Gene ID	6997
mRNA Refseq	NM_003212
Protein Refseq	NP_003203
MIM	187395
UniProt ID	P13385

 Tel: 1-631-559-9269 1-516-512-3133

 Email: info@creative-biomart.com  Fax: 1-631-938-8127

 45-1 Ramsey Road, Shirley, NY 11967, USA



Tel: 1-631-559-9269 1-516-512-3133

Email: info@creative-biomart.com Fax: 1-631-938-8127

45-1 Ramsey Road, Shirley, NY 11967, USA