

Recombinant Human TDGF1 Protein, His-tagged(C-ter)

Cat. No. TDGF1-295H Lot. No. (See product label)

SPECIFICATION

Product Overview	Recombinant Human TDGF1 Protein with His tag (C-ter) was expressed in HEK293.
Species	Human
Source	HEK293
ProteinLength	Leu31-Thr172
Description	This gene encodes an epidermal growth factor-related protein that contains a cripto, FRL-1, and cryptic domain. The encoded protein is an extracellular, membrane-bound signaling protein that plays an essential role in embryonic development and tumor growth. Mutations in this gene are associated with forebrain defects. Pseudogenes of this gene are found on chromosomes 2, 3, 6, 8, 19 and X. Alternate splicing results in multiple transcript variants. [provided by RefSeq, Mar 2010]
Form	Powder
Endotoxin	Endotoxin level is less than 0.1 EU/μg of the protein, as determined by the LAL test.
Purity	> 95% (by SDS-PAGE)
Applications	Binding, SDS-PAGE
Notes	For laboratory research only, not for drug, diagnostic or other use.

 Tel: 1-631-559-9269 1-516-512-3133

 Email: info@creative-biomart.com  Fax: 1-631-938-8127

 45-1 Ramsey Road, Shirley, NY 11967, USA

Storage Lyophilized protein should be stored at -20°C or -80°C. After reconstitution, aliquot and store at -20°C for up to one month, at 2-8°C for up to one week. Storage in frost free freezers is not recommended. Avoid repeated freeze/thaw cycles. Suggest spin the vial prior to opening.

Storage Buffer PBS (pH 7.4)

Reconstitution Reconstitute to a concentration of 0.1-0.5 mg/ml in sterile distilled water.

GENE INFORMATION

Gene Name TDGF1 teratocarcinoma-derived growth factor 1 [Homo sapiens]

Official Symbol TDGF1

Synonyms TDGF1; teratocarcinoma-derived growth factor 1; CR; CRIPTO; Cripto 1; cripto-1 growth factor; epidermal growth factor-like cripto protein CR1; CRGF;

Gene ID 6997

mRNA Refseq NM_001174136

Protein Refseq NP_001167607

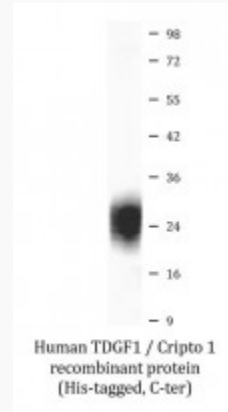
UniProt ID P13385

 Tel: 1-631-559-9269 1-516-512-3133

 Email: info@creative-biomart.com  Fax: 1-631-938-8127

 45-1 Ramsey Road, Shirley, NY 11967, USA

SDS-PAGE



 Tel: 1-631-559-9269 1-516-512-3133

 Email: info@creative-biomart.com  Fax: 1-631-938-8127

 45-1 Ramsey Road, Shirley, NY 11967, USA