

Active Recombinant Human TDGF1 protein, His-tagged

Cat. No. TDGF1-3350H Lot. No. (See product label)

SPECIFICATION

Product Overview	Active Recombinant Human TDGF1 protein(P13385)(Leu31-Thr172) is expressed from HEK293 with His tag at the C-Terminus.
Species	Human
Source	HEK293
ProteinLength	31-172 aa
Form	Lyophilized from 0.22 µm filtered solution in PBS (pH 7.4).
Bio-activity	Loaded Human ACVR1B, hFc Tag on A-Biosensor can bind Human TDGF1, His Tag with an affinity constant of 0.13 μ M as determined in BLI assay.
Molecular Mass	The protein has a predicted MW of 16.92 kDa. Due to glycosylation, the protein migrates to 23-30 kDa based on Bis-Tris PAGE result.
Endotoxin	Less than 1 EU per µg by the LAL method.
Purity	> 95% as determined by Bis-Tris PAGE
Storage	Store at -20 to -80°C for 12 months as supplied from date of receipt. -80°C for 3 months after reconstitution. Recommend to aliquot the protein into smaller quantities for optimal storage. Please minimize freeze-thaw cycles.

 Tel: 1-631-559-9269 1-516-512-3133

 Email: info@creative-biomart.com  Fax: 1-631-938-8127

 45-1 Ramsey Road, Shirley, NY 11967, USA

Reconstitution	Dissolve the lyophilized protein in distilled water.
protein Refseq-Weblink	http://www.ncbi.nlm.nih.gov/protein/NP_001167607.1
Unit ID	P13385
Unit ID-Weblink	http://www.uniprot.org/uniprot/P13385

GENE INFORMATION

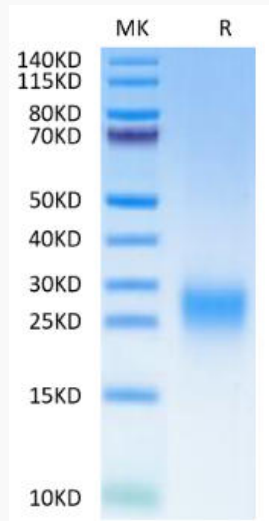
Gene Name	TDGF1 teratocarcinoma-derived growth factor 1 [Homo sapiens]
Official Symbol	TDGF1
Synonyms	TDGF1; teratocarcinoma-derived growth factor 1; CR; CRIPTO; Cripto 1; cripto-1 growth factor; epidermal growth factor-like cripto protein CR1; CRGF;
Gene ID	6997
mRNA Refseq	NM_001174136
protein Refseq	NP_001167607

 Tel: 1-631-559-9269 1-516-512-3133

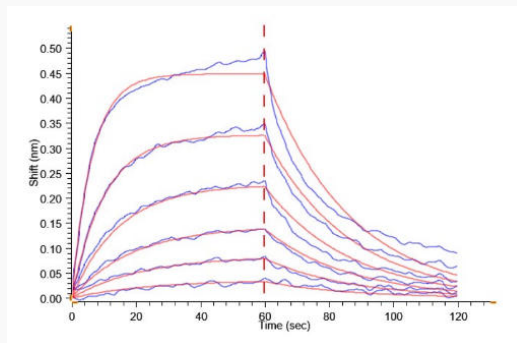
 Email: info@creative-biomart.com  Fax: 1-631-938-8127

 45-1 Ramsey Road, Shirley, NY 11967, USA

Bis-Tris PAGE



BLI Data



 Tel: 1-631-559-9269 1-516-512-3133

 Email: info@creative-biomart.com  Fax: 1-631-938-8127

 45-1 Ramsey Road, Shirley, NY 11967, USA